

EXPRESS TOOLS™

DIRECT

Express Tools Direct is proud to be the sole, authorised distributor of Sealey tools to the Australian professional tool user market.

A carefully selected range of high quality workshop and specialist tools from Sealey – one of the largest suppliers of garage and workshop tools and equipment in the UK.



Micrometer Style Calibrated Torque Wrenches

Supplied in EVA tray.



1/4" Sq. Drive 3/8" Sq. Drive or 1/2" Sq. Drive



LIFETIME GUARANTEE* Premier

- Flip reverse Chrome Vanadium steel ratchet heads with smooth action mechanism.
- Scale graduated in Nm and lb.ft.
- Calibration tolerance in accordance with BS EN ISO 6789-1:2017.
- Wrenches are individually tested to standards with ±4% accuracy and each wrench is issued with an individually numbered test certificate.
- Aluminium knurled handle for comfort and control.

Ref.	Model No	Drive	Range	Length	Special Price
A	STW901	1/4" Sq	5-25Nm (3.7-18.5lb.ft)	245mm	\$229.95
B	STW902	3/8" Sq	5-25Nm (3.7-18.5lb.ft)	245mm	\$239.95
C	STW903	3/8" Sq	20-120Nm (14.8-88.6lb.ft)	420mm	\$329.95
D	STW904	1/2" Sq	40-220Nm (29.5-162.4lb.ft)	520mm	\$359.95
E	STW905	1/2" Sq	60-330Nm (44.3-243.5lb.ft)	575mm	\$399.95

3/4" Sq Drive Micrometer Style Calibrated Torque Wrenches

3/4" Sq. Drive



Model No. STW906

- Flip reverse Chrome Vanadium steel ratchet heads with smooth action mechanism.
- Scale graduated in Nm and lb.ft.
- Calibration tolerance in accordance with BS EN ISO 6789-1:2017.
- Wrenches are individually tested to standards with ±4% accuracy and each wrench is issued with an individually numbered test certificate.
- Aluminium knurled handle for comfort and control.

Model No	Range	Length	Special Price
STW906	100-600Nm (73.8-442.8lb.ft)	1050mm	\$1,895.00
STW907	160-800Nm (118.1-590.4lb.ft)	1210mm	\$1,995.00

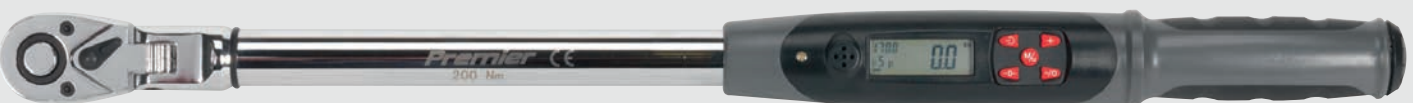
Premier

LIFETIME GUARANTEE*



Model No. STW907

1/2" Sq Drive Flexi-Head Digital Torque Wrench with Angle Function 20-200Nm



- LCD read-out with LED, audible alarm and vibration indicating achieved and target torque levels.
- 180° flexi-head for increased access in hard-to-reach applications.
- Read-outs in Nm, lb.in, lb.ft, kgf.m or degrees.
- Reversible Chrome Vanadium 72-tooth ratchet allows torque reading in either direction.
- Accurate to ±2% between 10% and 100% of wrench's stated capacity.
- Supplied with test certificate and storage case.
- **Model No. STW309**

1/2" Sq. Drive



Flexi-Head
20-200Nm
Angle Function

Premier

LIFETIME GUARANTEE*

TORQUES IN BOTH DIRECTIONS

SPECIAL PRICE \$899.00

15pc 1/4" Sq Drive Low Profile Socket Set - Platinum Series



MM 1/4" Sq. Drive Low Profile



- Low profile 90-tooth pear-head ratchet with super slim handle.
- Features flip reverse and quick release mechanism.
- Ideal for areas where access is limited, such as dash-mounted heater motors, auxiliary belts and solenoid door motors.
- Contents: Sockets; 4-14mm, 75mm Extension Bar; 90-Tooth Pear-Head Ratchet with Flip Reverse & Quick Release Mechanism.
- Supplied in an EVA storage tray.
- **Model No. AK5783**



SPECIAL PRICE
\$139.95

14pc 3/8" Sq Drive Low Profile Socket Set - Platinum Series



MM 3/8" Sq. Drive Low Profile



- Low profile 90-tooth pear-head ratchet with super slim handle.
- Features flip reverse and quick release mechanism.
- Ideal for areas where access is limited, such as dash-mounted heater motors, auxiliary belts and solenoid door motors.
- Contents: Sockets; 8-19mm, 75mm Extension Bar, 90-Tooth Pear-Head Ratchet with Flip Reverse & Quick Release Mechanism.
- Supplied in an EVA storage tray.
- **Model No. AK5785**



SPECIAL PRICE
\$189.95

15pc 1/2" Sq Drive Low Profile Socket Set - Platinum Series



1/2" Sq. Drive MM



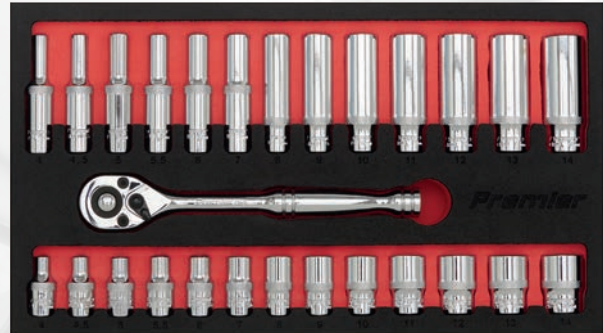
- Low profile 90-tooth pear-head ratchet with super slim handle.
- Features flip reverse and quick release mechanism.
- Ideal for use under dashboards and on auxiliary belts as well as any other applications where access is restricted.
- Contents: Sockets; 10-24mm, 150mm Extension Bar, 90-Tooth Pear-head ratchet with flip reverse and quick release mechanism.
- Supplied in an EVA storage tray.
- **Model No. AK5787**



Low Profile

SPECIAL PRICE
\$269.95

27pc 1/4" Sq Drive Ratchet Wrench & Socket Set



- Deluxe professional socket set with standard and deep heat treated mirror polished Chrome Vanadium sockets.
- Contents: 1/4" Sq Drive; Standard Sockets - 4-14mm, Deep Sockets - 4-14mm, 1/4" Sq Drive 72-Tooth Ratchet Wrench.
- Supplied in EVA storage tray.
- **Model No. AK66721**

MM 1/4" Sq. Drive

SPECIAL PRICE
\$169.95

25pc 3/8" Sq Drive Ratchet Wrench & Socket Set



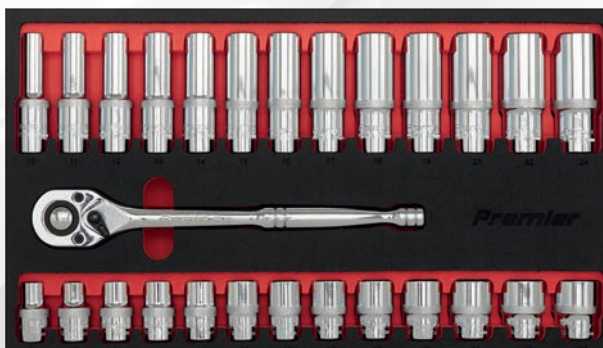
- Deluxe professional socket set with standard and deep heat treated mirror polished Chrome Vanadium sockets.
- Slim style contoured handle 72-tooth ratchet wrench with flip reverse and quick release mechanism.
- Contents: 3/8" Sq Drive; Standard Sockets - 8-19mm, Deep Sockets - 8-19mm, 3/8" Sq Drive 72-Tooth Ratchet Wrench.
- Supplied in EVA storage tray.
- **Model No. AK66722**

MM 3/8" Sq. Drive



SPECIAL PRICE
\$245.00

27pc 1/2" Sq Drive Ratchet Wrench & Socket Set



- Deluxe professional socket set with standard and deep heat treated mirror polished Chrome Vanadium sockets.
- Slim style contoured handle 72-tooth ratchet wrench with flip reverse and quick release mechanism.
- 1/2" Sq Drive; Standard Sockets - 10- 24mm, Deep Sockets - 10- 24mm, 1/2" Sq Drive 72-Tooth Ratchet Wrench.
- **Model No. AK66723**

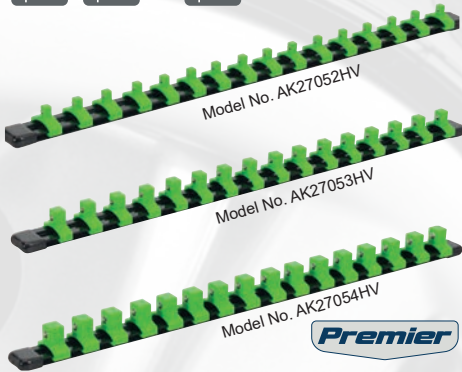
MM 1/2" Sq. Drive



SPECIAL PRICE
\$339.95

Retaining Rails with 16 Clips

1/4" Sq. Drive 3/8" Sq. Drive or 1/2" Sq. Drive



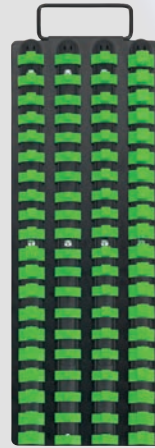
Aluminium socket rails with hi-vis green nylon clips.

Model No	Drive	Special Price
AK27052HV	1/4"Sq	\$49.95
AK27053HV	3/8"Sq	\$52.95
AK27054HV	1/2"Sq	\$54.95

1/4", 3/8" & 1/2" Sq Drive Socket Rail Tray

Premier

1/4", 3/8" or 1/2" Sq. Drive



- Steel panel with 4 x 430mm composite rails.
- Supplied with clips suitable for retaining 1/4", 3/8" and 1/2" Sq drive sockets.
- Fitted with carry handle.
- Model No. AK27051HV

SPECIAL PRICE
\$155.00

9pc Scraper & Hook Set with Tool Tray



WEB VIDEO

Premier

- Contents: Picks 165, 260mm; Straight, Right Angle, Half Round, Swan Neck, Scraper 260 x 25mm.
- Tray Size (W x D x H): 176.5 x 397 x 55mm.
- Model No. TBT23

SPECIAL PRICE
\$159.95

3pc Wobble/Rigid Extension Bar Sets - Black Series



3/8" Sq. Drive or 1/2" Sq. Drive

Premier Black

- Heat treated and hardened Chrome Vanadium steel shafts.
- Fully polished black chrome finish with machined and lacquered heads.
- Cut-away tips allow sockets to be driven with shaft offset of up to 10°.
- Deep knurling on shafts allows extra grip when spinning off fixings.
- Spring-ball socket retainers.
- Lifetime guarantee*.

Model No	Drive	Special Price
AK7691	3/8"Sq	\$71.95
AK7692	1/2"Sq	\$89.95

5pc Wobble Extension Bar Sets



1/4" Sq. Drive or 1/2" Sq. Drive

Premier



- Forged Chrome Vanadium steel shafts, heat treated and chrome plated with mirror finish.
- Cut-away tips allow sockets to be driven with shaft offset of 10°.
- Deep knurling on shafts allows extra grip when spinning off fixings.
- Spring-ball socket retainers.
- Lifetime guarantee*.

Model No	Drive	Sizes	Special Price
AK766	1/4"Sq	50, 75, 100, 150, 225mm	\$59.95
AK768	1/2"Sq	50, 125, 250, 375, 500mm	\$239.95

8pc Impact Socket Adaptor Set

1/4" Sq. Drive

3/8" Sq. Drive

1/2" Sq. Drive

3/4" Sq. Drive

1" Sq. Drive

Premier



- Comprehensive set of impact adaptors for use on all types of impact tools.
- Manufactured from drop-forged Chrome Vanadium steel with phosphate finish for added corrosion resistance.
- Contents: 1/4"(F) x 3/8"(M), 3/8"(F) x 1/4"(M), 3/8"(F) x 1/2"(M), 1/2"(F) x 3/8"(M), 1/2"(F) x 3/4"(M), 3/4"(F) x 1/2"(M), 3/4"(F) x 1"(M), 1"(F) x 3/4"(M).
- Lifetime guarantee*.
- Model No. AK5900B

SPECIAL PRICE
\$139.95

6pc Socket Adaptor Set

Premier

1/4", 3/8", 1/2" & 3/4" Sq. Drive



- Chrome Vanadium socket adaptor set.
- Hardened, tempered and chrome plated.
- Fitted with spring-ball socket retainer.
- Contents: 1/4"(M) x 3/8"(F), 3/8"(M) x 1/4"(F), 3/8"(M) x 1/2"(F), 1/2"(M) x 3/8"(F), 1/2"(M) x 3/4"(F), 3/4"(M) x 1/2"(F) Sq Drive.
- Supplied in storage case.
- Model No. AK2736

SPECIAL PRICE
\$75.50

27pc Insulated Tool Kit - VDE Approved



3/8" Sq. Drive



Premier

- Manufactured from hardened and tempered Chrome Vanadium steel.
- Each tool is fully insulated to VDE and EN 60900 standards to protect from electric shocks up to 1500V DC and 1000V AC.
- Contents: 3/8" Sq Drive Sockets; 7, 8, 10, 12, 13, 14, 17, 19, 22mm, 3/8" Sq Drive Reversible Ratchet, 3/8" Sq Drive 100mm Extension Bar, 3/8" Sq Drive T-Handle, Open-End Spanners; 7, 8, 10, 12, 13, 14, 17, 19mm, Screwdrivers; Slotted - 4 x 100, 5.5 x 125mm, Phillips - #1 x 100, #2 x 100mm, Pliers; 200mm Combination, 160mm Diagonal Side Cutters, Cable Knife.
- Lifetime guarantee*.
- Model No. AK7945

SPECIAL PRICE
\$1,395.00

100pc Mechanic's Tool Kit



1/4" & 1/2" Sq. Drive

90-Tooth

- Contents: 1/4" Sq Drive Standard Sockets; 4-13mm, 1/4" Sq Drive Deep Sockets; 9-13mm, 1/4" Sq Drive Tools; Offset Ratchet Wrench, Universal Joint, 75mm Extension Bar, Bit Holder, Spinner Handle, 1/2" Sq Drive Standard Sockets; 10-32mm, 1/2" Sq Drive Spark Plug Sockets; 16, 21mm, 1/2" Sq Drive Tools; Offset Ratchet Wrench, Universal Joint, 125mm Extension Bar, Combination Spanners; 8-19mm, 25mm Adaptor, 1/4" Hex Bits; Slotted - 4, 5.5, 7mm, Phillips - #1, #2, #3, Hex - 3, 4, 5, 6mm, TRX Star* - T15, T20, T30, Hex Keys; 1.5, 2, 2.5mm, Screwdrivers; Slotted - 5 x 38mm, 6 x 100mm, Phillips - #1 x 38mm, #2 x 100mm, Pozi - #2 x 150mm, Pliers; Water Pump, Combination, Side Cutters, 12oz Ball Pein Hammer, Wire Stripper/Crimper, Terminals (x26).
- Case Size (W x D x H): 465 x 375 x 90mm.
- Lifetime guarantee*.
- Model No. AK7400

SPECIAL PRICE
\$559.95

219pc 1/4", 3/8" & 1/2" Sq Drive Socket Set



1/4", 3/8" or 1/2" Sq. Drive

- Professional socket set manufactured from hardened and heat treated Chrome Vanadium steel.
- Fully polished with a mirror finish.
- Covers sizes from 4 to 32mm.
- Includes 72-tooth ratchet wrenches, spark plug sockets, extension bars, female TRX-Star* sockets, socket bits, combination spanners, bits, hex keys and accessories.
- Lifetime guarantee*.
- Model No. S01212

SPECIAL PRICE
\$859.95

38pc 1/4" Sq Drive Socket & Bit Set



MM

1/4" Sq. Drive

Premier

- Manufactured from high quality Chrome Vanadium steel.
- Hardened and tempered sockets and accessories with a fully polished finish for resistance to corrosion.
- Features 48-tooth flip reverse comfort grip ratchet wrench with push-button quick release, spinner handle, extension bars, universal joint and bit adaptor.
- Contents: Slotted; 3, 4, 5, 6, Phillips; #1, #2 (x2), #3, Pozi; #1, #2, #3, Security TRX-Star*; T10H, T15H, T20H, T25H, T27H, T30H, T40H, Hex; 3, 4, 5, 6mm, 1/4" Sq Drive Sockets; 5.5, 6, 7, 8, 9, 10, 11, 12, 13, 14mm, 50, 100mm Extension Bars, 1/4" Sq Drive 48-Tooth Ratchet Wrench, Spinner handle, Bit coupler, Universal Joint.
- Lifetime guarantee*.
- Model No. AK8945

SPECIAL PRICE
\$219.95

Compact Head Ratchet Wrenches - Platinum Series



Model No. AK8989

- Chrome Vanadium steel ratchet wrenches.
- Hardened and tempered with a fully polished micro satin finish.
- Compact head design and ultra-smooth 72-tooth ratchet action, allowing ratcheting in increments of 5° for ease of use in restricted areas.
- Textured soft grip handle for comfort and control.
- Features integrated socket spinner, flip reverse and quick release mechanism.

Compact Head

72-Tooth

1/4" Sq. Drive 3/8" Sq. Drive or 1/2" Sq. Drive



Model No	Drive	Length	Special Price
AK8987	1/4"Sq	130mm	\$89.95
AK8988	3/8"Sq	195mm	\$119.95
AK8989	1/2"Sq	250mm	\$139.95

1/2"Sq Drive Knuckle for AK730 & AK7302



1/2" Sq. Drive

- Knuckle joint for Model No's AK730 & AK7302 1/2"Sq Drive Breaker Bar.

• Model No. AK730/RK

SPECIAL PRICE
\$31.95

450mm 1/2"Sq Drive Breaker Bar

1/2" Sq. Drive

450mm Length



*Note: Knuckle joints are not covered by the lifetime guarantee and are treated as consumable items.

- Length: 450mm.
- Hardened and tempered Chrome Vanadium steel bar with high chrome finish.
- Long, slim style handle with spring loaded socket retention.
- Fully replaceable knuckle joint*.
- Lifetime guarantee*.
- Model No. AK7301

SPECIAL PRICE
\$69.95

450mm 3/8"Sq Drive Breaker Bar

3/8" Sq. Drive

450mm Length



*Note: Knuckle joints are not covered by the lifetime guarantee and are treated as consumable items.

- Hardened and tempered Chrome Vanadium steel bar with high chrome finish.
- Long, slim style handle with spring loaded socket retention.
- Fully replaceable knuckle joint*.
- Lifetime guarantee*.
- Model No. AK729

SPECIAL PRICE
\$64.95

1/2"Sq Drive Extendable Breaker Bar



450-600mm Length

Extendable



*Note: Knuckle joints are not covered by the lifetime guarantee and are treated as consumable items.

- Manufactured from Chrome Vanadium steel.
- Hardened and tempered with a chrome plated mirror finish.
- Extension retained at set increments with a quick release locking ring giving four different shaft lengths.
- Fully replaceable knuckle joint*.
- Lifetime guarantee*.
- Model No. AK7315

SPECIAL PRICE
\$145.00

600mm 1/2"Sq Drive Breaker Bars



1/2" Sq. Drive

600mm Length



- Hardened and tempered Chrome Vanadium steel bars with a coloured high chrome finish.
- Long, slim style handle and spring loaded socket retention.
- Fully replaceable knuckle joint*.

Model No	Colour	Special Price
AK730G	Gold	\$119.95
AK730B	Blue	\$119.95
AK730R	Red	\$119.95

*Note: Knuckle joints are not covered by the lifetime guarantee and are treated as consumable items.

1/2"Sq Drive Extendable Ratcheting Breaker Bar

*Note: Knuckle joints are not covered by the lifetime guarantee and are treated as consumable items.



1/2" Sq. Drive

460-600mm Length

Extendable



- 36-Tooth ratchet needs only 10° rotation to engage next tooth.
- 180° Flexible head with 3-position control ring gives anticlockwise/clockwise ratchet and locked.
- Extension retained at set increments with a quick release locking ring giving different shaft lengths.
- Length: 460-600mm.
- Manufactured from Chrome Vanadium steel.
- Soft grip handle for added comfort.
- Fully replaceable ratchet knuckle joint*.
- Lifetime guarantee*.
- Model No. AK7316

SPECIAL PRICE
\$199.00

13pc 1/2" Sq Drive Low Profile Impact Socket Set

MM
1/2" Sq. Drive
6pt WALLDRIVE®



- Hardened and heat treated Chrome Molybdenum steel impact sockets with a phosphate finish for corrosion resistance.
- WallDrive® sockets allow a transfer of up to 30% more torque to the fixing.
- Low profile sockets with a depth of just 28mm, ideal for use in any application where access is restricted.
- Suitable for use with air/electric impact guns.
- Sizes: 10, 11, 12, 13, 14, 15, 16, 17, 18, 19, 21, 22, 24mm.
- Lifetime guarantee*.

• **Model No. AK5613LP**

10-24mm
Low Profile



SPECIAL PRICE
\$135.95

1/4" Hex Torque Screwdriver Digital 0-20Nm



1/4" Hex Drive

0-20Nm



- Suitable for automotive, workshop and factory use.
- LCD read-out with LED, audible alarm and vibration indicating achieved and target torque levels.
- Preset track, peak or desired torque levels using simple push-button menu.
- Clockwise and anticlockwise operation.
- Selectable read-out in Nm or lb.ft.
- Accurate to ±1% of stated capacity.
- Textured, contoured handle for added grip and comfort.
- Supplied with 2 x AAA batteries and test certificate.
- Lifetime guarantee*.

• **Model No. STS104**

SPECIAL PRICE
\$319.95

32pc 3/8" & 1/2" Sq Drive Impact Socket Set Standard/Deep - Metric/Imperial

MM
IMP
Deep
3/8" & 1/2" Sq. Drive



6pt WALLDRIVE®

Deep Standard Premier

- Electrodeposition finish.
- Contents: 3/8" Sq Drive Sockets; 8, 9, 10, 11, 12, 14, 15, 16, 17mm, 1/2" Sq Drive Sockets; 17, 19, 22, 30mm, 1/2", 9/16", 11/16", 13/16", 1", 1-1/8", 1/2" Sq Drive Deep Sockets; 13, 15, 17, 18, 19, 21, 22, 24, 27, 30mm, Extension Bars; 3/8" x 75mm, 1/2" x 75mm, Adaptor; 1/2" F-3/8" M.
- Lifetime guarantee*.

• **Model No. AK681**

SPECIAL PRICE
\$299.00

34pc 1/2" Sq Drive Impact Socket Set

6pt WALLDRIVE®



MM

1/2" Sq. Drive

Deep

Standard

10-32mm



- Master set of impact sockets manufactured from Chrome Vanadium steel.
- Hardened and tempered with a phosphate finish for added corrosion resistance.
- Standard and deep WallDrive® sockets allow a transfer of up to 30% more torque to the fixing.
- Contents: 10-32mm (1 of each Standard and Deep), 125mm Extension Bar, Universal Joint.
- Lifetime guarantee*.

• **Model No. AK5634M**

SPECIAL PRICE
\$449.00

Impact Socket Adaptor Sets

1/4" Sq. Drive **3/8" Sq. Drive** **1/2" Sq. Drive**

Model No. AK5521



- Manufactured from Chrome Vanadium steel with manganese phosphate finish for added resistance from corrosion.
- **AK5521 Contents:** 65mm 1/4" Hex x 1/4" Sq Drive, 65mm 1/4" Hex x 3/8" Sq Drive, 75mm 1/4" Hex x 1/2" Sq Drive.
- **AK5522 Contents:** 65mm 1/4" Hex x 1/4" Sq Drive, 65mm 1/4" Hex x 3/8" Sq Drive, 75mm 1/4" Hex x 1/2" Sq Drive, 3/8" (F) x 1/4" (M), 1/4" (F) x 3/8" (M), 3/8" (F) x 1/2" (M), 1/2" (F) x 3/8" (M).
- Lifetime guarantee*.

Model No	Set Qty	Special Price
AK5521	3pc	\$41.95
AK5522	7pc	\$89.95

28pc 3/8" & 1/2" Sq Drive Impact TRX-Star*/Hex/Spline Bit Set



3/8" & 1/2" Sq. Drive



- Contents: TRX-Star Bits; T10, T15, T20, T25, T27, T30, T40, T45, T50, T55, T60, Hex Bits; 4, 5, 6, 7, 8, 10, 12mm, Spline Bits; M5, M6, M8, M10, M12, M14, M16, M18, Drive Adaptors; 3/8" Sq x 10mm Hex, 1/2" Sq x 10mm Hex.
- Lifetime guarantee*.

• **Model No. AK21902**

SPECIAL PRICE
\$199.00

42pc 3/8" & 1/2" Sq Drive Impact TRX-Star*/Hex/Spline Bit Set



3/8" & 1/2" Sq. Drive

MM



- Contents: TRX-Star Bits; T20, T25, T30, T40, T45, T50, T55, T60 (1 each 36 & 75mm), Hex Bits; 4, 5, 6, 7, 8, 10, 12mm (1 each 36 & 75mm), Spline Bits; M5, M6, M8, M10, M12 (1 each 36 & 75mm), Drive Adaptors; 3/8" Sq x 10mm Hex, 1/2" Sq x 10mm Hex.
- Supplied in storage case with inclined tray for quick and easy bit selection.
- Lifetime guarantee*.

• **Model No. AK21901**

SPECIAL PRICE
\$259.95

12pc Soft Grip Screwdriver Set



- Chrome Vanadium steel with satin finish.
- Contents: Slotted; 6 x 38, 5 x 100, 6 x 100, 6 x 150, 8 x 200mm, Phillips; #1 x 75, #2 x 38, #2 x 100, TRX-Star*; T10 x 100, T15 x 100, T20 x 100, T25 x 100mm.
- Lifetime guarantee*.
- **Model No. S0616**

SPECIAL PRICE
\$75.95

3pc Extra-Long Screwdriver Set



Extra-Long



- Hardened and tempered 450mm extra-long Chrome Vanadium steel shafts with a satin polished finish.
- Shot blasted and magnetized tips.
- Contoured soft grip handles with colour-coding for fast identification.
- Contents: Slotted; 8 x 450mm, Phillips; #2 x 450, #3 x 450mm.
- Lifetime guarantee*.
- **Model No. S0895**

SPECIAL PRICE
\$59.95

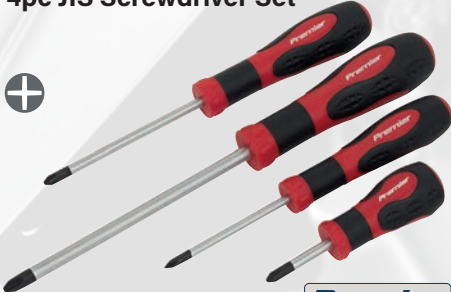
8pc TRX-Star* Screwdriver Set



- Hardened and tempered Chrome Vanadium steel shafts with a satin finish.
- Shot blasted and magnetized tips.
- Contoured handles with soft rubber grip for comfort and control.
- Sizes: T8 x 75, T10 x 75, T15 x 100, T20 x 100, T25 x 100, T27 x 100, T30 x 125, T40 x 125mm.
- Lifetime guarantee*.
- **Model No. S0897**

SPECIAL PRICE
\$51.95

4pc JIS Screwdriver Set



- High quality Chrome Vanadium steel satin finished shafts with shot blasted and magnetized tips.
- JIS Screwdrivers for Japanese Industrial Standard Screws.
- Commonly found on Japanese manufactured cars and motorcycles.
- Using the correct JIS Screwdrivers will prevent cam-out, therefore preventing the damage to JIS fixings that Phillips screwdrivers can cause.
- Contents: #2 x 38, #1 x 75, #2 x 100, #3 x 150mm.
- Lifetime guarantee*.
- **Model No. AK4314**

SPECIAL PRICE
\$64.95

13pc Hammer-Thru Screwdriver Set



- Chrome Vanadium steel hammer-thru hex shafts with satin finish.
- Screwdrivers are shot blasted and have magnetized tips.
- Contents: Slotted; 6 x 38, 3 x 75, 4 x 100, 5 x 100, 6 x 125, 8 x 150, 8 x 200mm, Phillips; #0 x 75, #1 x 75, #2 x 38, #2 x 100, #3 x 150, #3 x 200mm.
- Lifetime guarantee*.
- **Model No. S0754**

SPECIAL PRICE
\$119.95

2pc Screwdriver Rack



TOOLS NOT INCLUDED

- Durable composite screwdriver rack.
- Soft non-marking anti-slip TPR material.
- Holds up to 14 screwdrivers.
- 395mm Long 2-piece set.
- Lifetime guarantee*.
- **Model No. SR01**

SPECIAL PRICE
\$44.95

12pc Ratchet Screwdriver Set



- Twist-reverse and ratchet lock mechanism.
- Chrome Vanadium steel shaft with magnetic bit retention.
- Features spring loaded integral bit storage.
- Supplied with 12pc S2 steel bit set.
- Bits: Slotted; 4, 5, 6mm, Phillips; #1, #2, Pozzi; #2, Hex; 3, 4, 5mm, TRX-Star*; T15, T20, T25.
- Lifetime guarantee*.
- **Model No. AK64909**

SPECIAL PRICE
\$54.95

6pc Mini Pick & Screwdriver Set



- Chrome Vanadium shafts with soft grip handles for added comfort.
- Hooks and picks suitable for removal of bushings, cotter pins, O-rings and seals.
- Also features mini Phillips and slotted screwdrivers.
- Lifetime guarantee*.
- **Model No. S0774**

SPECIAL PRICE
\$29.95

1/4"Hex x 10mm Hex Reversible Ratchet Spanner

Reversible

72-Tooth



- Manufactured from hardened and tempered Chrome Vanadium steel with a fully polished mirror finish.
- Double end ratchet spanner combining 1/4"Hex and 10mm Hex drives.
- The heads are fitted with a knurled ring to allow rapid tightening/loosening of fixings.
- Ultra-smooth 72-tooth ratchet action with flip reverse.
- Ideal for limited access applications.
- Lifetime guarantee*.
- **Model No. AK6968**

SPECIAL PRICE
\$69.95

12pc Combination Spanner Set - Black Series



MM

8-19mm



- Drop-forged Chrome Vanadium steel spanners.
- Hardened and tempered with a black electrodeposition finish for corrosion resistance.
- 15° Offset open-end and WallDrive® ring combination with long slim shafts.
- Sizes: 8, 9, 10, 11, 12, 13, 14, 15, 16, 17, 18, 19mm.
- Supplied in an EVA storage tray.
- Lifetime guarantee*.
- **Model No. AK63263B**

SPECIAL PRICE

\$149.95

25pc Combination Spanner Set - Black Series



MM

6-32mm



- Drop-forged Chrome Vanadium steel spanners.
- Hardened and tempered with a black electrodeposition finish for corrosion resistance.
- 15° Offset open-end and WallDrive® ring combination with long slim shafts.
- Sizes: 6, 7, 8, 9, 10, 11, 12, 13, 14, 15, 16, 17, 18, 19, 20, 21, 22, 23, 24, 25, 26, 27, 28, 30, 32mm.
- Supplied in an EVA storage tray.
- Lifetime guarantee*.
- **Model No. AK63264B**

SPECIAL PRICE

\$455.00

23pc Combination Spanner Set - Metric/Imperial



MM

IMP

8-19mm

1/4"-7/8"



- Cold stamped slim style Chrome Vanadium steel spanners with a satin polished finish for corrosion resistance.
- Open-end and 12-point WallDrive® ring combination.
- Sizes: 8, 9, 10, 11, 12, 13, 14, 15, 16, 17, 18, 19mm, 1/4", 5/16", 3/8", 7/16", 1/2", 9/16", 5/8", 11/16", 3/4", 13/16", 7/8".
- Overall Size (W x D x H): 375 x 284 x 40mm.
- Supplied in 25mm EVA storage tray.
- Lifetime guarantee*.
- **Model No. AK63255**

SPECIAL PRICE

\$215.00

25pc Combination Spanner Set



MM

SATIN FINISH

6-32mm



- Slim style Chrome Vanadium steel spanners with a satin polished finish for corrosion resistance.
- Open-end and 12-point WallDrive® ring combination.
- Contents: 6, 7, 8, 9, 10, 11, 12, 13, 14, 15, 16, 17, 18, 19, 20, 21, 22, 23, 24, 25, 26, 27, 28, 30, 32mm.
- Overall Size (W x D x H): 400 x 285 x 70mm.
- Supplied in EVA storage tray.
- Lifetime guarantee*.
- **Model No. AK63258**

SPECIAL PRICE

\$359.95

5pc Flexi-Head Flare Nut Spanner Set



9-21mm

MM

- Manufactured from high quality Chrome Vanadium steel.
- Hardened and tempered with a fully polished mirror finish.
- Flare type spanner jaw suitable for most common sizes of compression joint fitting.
- Flexible head is ideal for awkward applications.
- Sizes: 9 x 11, 10 x 12, 13 x 14, 15 x 17, 19 x 21mm.
- Supplied in EVA storage tray.
- Lifetime guarantee*.
- **Model No. AK2652**

SPECIAL PRICE

\$279.95

12pc Combination Ratchet Spanner Set Platinum Series



MM



8-19mm

100-Tooth

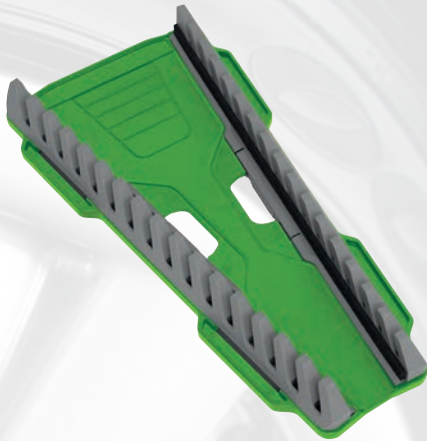


- High quality slim style Chrome Vanadium steel spanners.
- Hardened and tempered with a fully polished micro satin finish.
- Ultra-smooth 100-Tooth WallDrive® ratchet ring.
- Ideal for use where space is limited.
- Sizes: 8, 9, 10, 11, 12, 13, 14, 15, 16, 17, 18, 19mm.
- Supplied in storage/carry rack.
- Lifetime guarantee*.
- **Model No. AK63940**

SPECIAL PRICE

\$479.95

16pc Reversible Spanner Rack - Hi-Vis Green

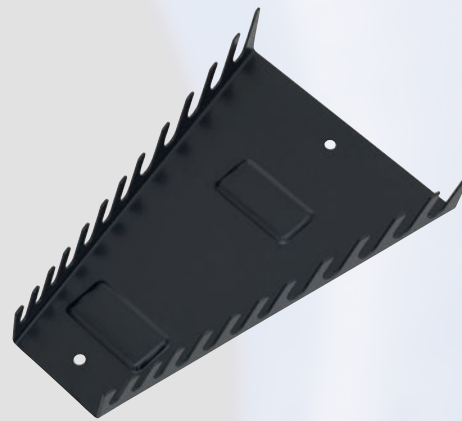


Premier

- Reversible side rails with quick change design.
- Spanners always face forward for easy selection and size identification.
- Holds up to 16 spanners.
- **Model No. WR11HV**

SPECIAL PRICE
\$59.95

Magnetic Spanner Rack - Capacity 12 Spanners



Magnetic

Premier



- Magnetic spanner rack with protective foam backing, ideal for tool chests or any ferrous surface.
- Holds up to 12 spanners for easy size identification.
- Can also be wall mounted.
- **Model No. WR03**

SPECIAL PRICE
\$59.95

10pc Extra-Long Jumbo Hex Key Set

MM

3-17mm

Jumbo Keys

Premier



- Manufactured from heat treated and hardened Chrome Vanadium steel with matt chrome finish.
- Jumbo sizes suitable for industrial and agricultural applications.
- Sizes: 3, 4, 5, 6, 7, 8, 10, 12, 14, 17mm.
- Supplied in tough storage case.
- Lifetime guarantee*.
- **Model No. AK6143**

SPECIAL PRICE
\$175.00

16pc T-Handle TRX-Star* & Hex Key Set



MM

Premier



- Hardened and tempered Chrome Vanadium steel shafts with satin finish.
- Tough, composite, comfort grip handle allows extra torque to be applied to the fixing.
- Each handle incorporates either a long TRX-Star* and short security TRX-Star* shaft, or a long ball-end hex and short hex shaft.
- Contents: Security TRX-Star*/TRX-Star*; T10, T15, T20, T25, T30, T40, T45, T50, Hex/Ball-End Hex; 2, 2.5, 3, 4, 5, 6, 8, 10mm.
- Length: 75-200mm.
- Lifetime guarantee*.
- **Model No. AK7147**

SPECIAL PRICE
\$229.95

9pc Anti-Slip Extra-Long Ball-End Hex Key Set

MM

Anti-Slip

Extra-Long

1.5-10mm

Premier



- Manufactured from hardened and heat treated Chrome Vanadium steel with a fully polished finish.
- Keys range in length from 90mm to 230mm and in size from 1.5mm to 10mm.
- Colour-coded anti-slip coating for comfort, control and fast identification.
- Supplied in easy-access case for safe storage and quick key selection.
- Lifetime guarantee*.
- **Model No. AK7191**

SPECIAL PRICE
\$79.95

9pc Anti-Slip Extra-Long TRX-Star* Key Set

Anti-Slip

Extra-Long

T10 - T50

Premier



- Manufactured from hardened and heat treated Chrome Vanadium steel with a fully polished finish.
- Keys range in length from 90mm to 230mm and in size from T10 to T50.
- Colour-coded anti-slip coating for comfort, control and fast identification.
- Supplied in easy-access case for safe storage and quick key selection.
- Lifetime guarantee*.
- **Model No. AK7194**

SPECIAL PRICE
\$79.95

9pc Anti-Slip Extra-Long Ball-End Hex Key Set - Imperial

IMP Anti-Slip

Extra-Long

1/16"-3/8"

Premier



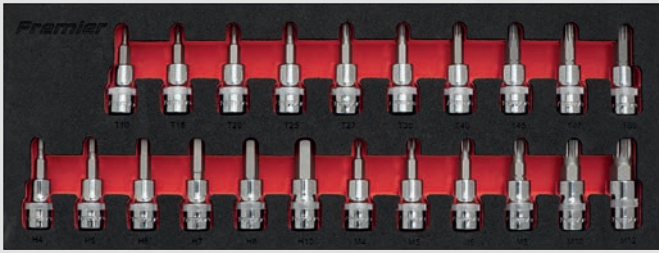
- Manufactured from hardened and heat treated Chrome Vanadium steel with a fully polished finish.
- Keys range in length from 90mm to 230mm and in size from 1/16" to 3/8".
- Colour-coded anti-slip coating for comfort, control and fast identification.
- Sizes: 1/16", 5/64", 3/32", 1/8", 5/32", 3/16", 1/4", 5/16", 3/8".
- Supplied in easy-access case for safe storage and quick key selection.
- Lifetime guarantee*.
- **Model No. AK7198**

SPECIAL PRICE
\$74.95

LIFETIME GUARANTEE

All Hand Tools have a no-quibble lifetime guarantee*

22pc 3/8" Sq Drive TRX-Star*/Hex/Spline Socket Bit Set



3/8" Sq. Drive

Premier



- Forged Chrome Vanadium steel sockets with S2 steel hex bits.
- Sockets are heat treated and chrome plated with a fully polished mirror finish.
- Knurled rings assist the gripping of the sockets with oily fingers.
- Sizes: 3/8" Sq Drive (50mm) Socket Bits; Spline - M4, M5, M6, M8, M10, M12, TRX-Star* - T10, T15, T20, T25, T27, T30, T40, T45, T47, T50, Hex - 4, 5, 6, 7, 8, 10mm.
- Supplied in EVA storage tray.
- Lifetime guarantee*.
- **Model No. AK6243**

SPECIAL PRICE

\$189.95

32pc 3/8" Sq Drive TRX-Star* Socket Bit Set - Platinum Series

3/8" Sq. Drive



T20 - T70

- Drop-forged Chrome Vanadium steel sockets with S2 steel TRX-Star* bits.
- Sockets heat treated and chrome plated for resistance to corrosion.
- Fully polished micro satin finish with knurled ring to assist gripping with oily fingers.
- Contents: Length 48mm; T20, T25, T27, T30, T40, T45, T50, T55, T60, T70, Length 93mm; T20, T25, T27, T30, T40, T45, T50, T55, T60, T70, Length 140mm; T40, T45, T50, T55, T60, T70, Length 200mm; T40, T45, T50, T55, T60, T70.
- Lifetime guarantee*.
- **Model No. AK89001**



Premier Platinum series

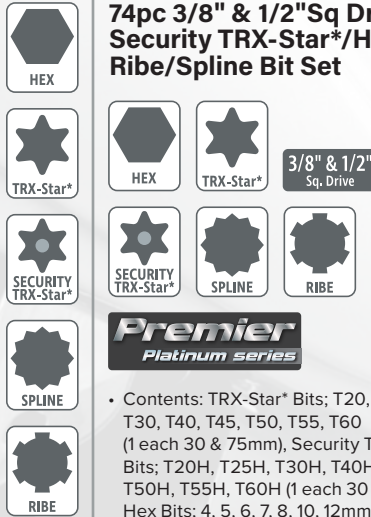
SPECIAL PRICE

\$319.95

74pc 3/8" & 1/2" Sq Drive TRX-Star*/Security TRX-Star*/Hex/Ribe/Spline Bit Set

3/8" & 1/2" Sq. Drive

Premier



- Long and short ribe, spline, hex, TRX-Star* and security TRX-Star* bits.
- Set includes 3/8" and 1/2" Sq drive to 10mm hex Chrome Vanadium steel bit adaptors.
- Contents: TRX-Star* Bits; T20, T25, T30, T40, T45, T50, T55, T60 (1 each 30 & 75mm), Security TRX-Star* Bits; T20H, T25H, T30H, T40H, T45H, T50H, T55H, T60H (1 each 30 & 75mm), Hex Bits; 4, 5, 6, 7, 8, 10, 12mm (1 each 30 & 75mm), Ribe Bits; M5, M6, M7, M8, M9, M10, M12, M14 (1 each 30 & 75mm), Spline Bits; M5, M6, M8, M10, M12 (1 each 30 & 75mm), Drive Adaptors; 3/8" Sq x 10mm Hex, 1/2" Sq x 10mm Hex.
- Lifetime guarantee*.
- **Model No. AK21974**

SPECIAL PRICE

\$199.00

74pc 3/8" & 1/2" Sq Drive TRX-Star*/Security TRX-Star*/Hex/Ribe/Spline Bit Set

3/8" & 1/2" Sq. Drive



Premier Platinum series

- Contents: TRX-Star* Bits; T20, T25, T30, T40, T45, T50, T55, T60 (1 each 30 & 75mm), Security TRX-Star* Bits; T20H, T25H, T30H, T40H, T45H, T50H, T55H, T60H (1 each 30 & 75mm), Hex Bits; 4, 5, 6, 7, 8, 10, 12mm (1 each 30 & 75mm), Ribe Bits; M5, M6, M7, M8, M9, M10, M12, M14 (1 each 30 & 75mm), Spline Bits; M5, M6, M8, M10, M12 (1 each 30 & 75mm), Drive Adaptors; 3/8" Sq x 10mm Hex, 1/2" Sq x 10mm Hex.
- Lifetime guarantee*.
- **Model No. AK21974P**

SPECIAL PRICE

\$259.95



8pc Impact Driver Set

Premier



HEAVY DUTY



- Professional 1/2" Sq drive impact driver with contoured grip and phosphate finish.
- Features twist-reverse for operation in either direction.
- Supplied with 6pc Chrome Vanadium steel driver bit set and 8mm hex drive adaptor.
- Driver Bits: 8mm Bits (35mm Long); Slotted - 8, 10mm, Phillips - #2, #3, 8mm Bits (80mm Long); Phillips #2, #3.
- Lifetime guarantee*.
- **Model No. AK2085**

SPECIAL PRICE

\$114.95

7pc 1/4" Sq Drive TRX-TS* Security Socket Bit Set

1/4" Sq. Drive



TS10H - TS40H Premier

- Chrome Vanadium steel sockets and bits.
- Knurled ring on sockets to assist gripping with oily fingers.
- 5-Spline security TRX-TS* bits suitable for a range of fuel injection applications.
- Sizes: TS10H, TS15H, TS20H, TS25H, TS27H, TS30H, TS40H.
- Supplied on socket rail.
- Lifetime guarantee*.
- **Model No. SX106**

SPECIAL PRICE

\$49.95



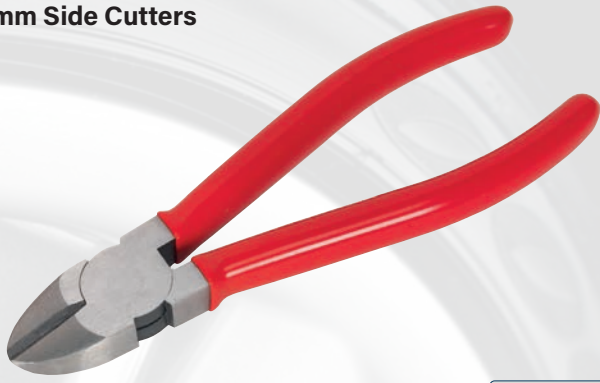
HAND TOOLS

EXPRESS TOOLS DIRECT

Express Tools Direct is proud to be the sole, authorised distributor of Sealey tools to the Australian professional tool user market.

SEALEY

160mm Side Cutters



- Drop-forged Chrome Vanadium steel side cutters.
- Finely ground heads with a fully polished finish.
- Precision ground cutting edges, induction-hardened 55-60 HRC for cutting hard and soft wires.
- Vinyl dipped handles for comfort and control.
- Lifetime guarantee*.
- **Model No. AK8565**

Premier

SPECIAL PRICE
\$39.95

6pc Mini Pliers Set



- Manufactured from hardened and tempered drop-forged Chrome Vanadium steel.
- Finely ground polished heads.
- Serrated jaws and precision ground cutting edges, induction-hardened 55-65 HRC for cutting hard and soft wires.
- Dual material comfort grip handles.
- Contents: 105mm End Cutters, 115mm Side Cutters, 115mm Combination Pliers, 125mm Bent Nose Pliers, 125mm Long Nose Pliers, 145mm Needle Nose Pliers.
- Lifetime guarantee*.
- **Model No. AK8381**

Premier

SPECIAL PRICE
\$129.95

180mm Heavy-Duty Side Cutters



- Drop-forged Chrome Vanadium steel side cutters.
- Finely ground heads with a fully polished finish.
- Precision ground cutting edges, induction-hardened 55-60 HRC for cutting hard and soft wires.
- Vinyl dipped handles for comfort and control.
- Lifetime guarantee*.
- **Model No. AK8566**

Premier

HEAVY DUTY

SPECIAL PRICE
\$44.95

2pc Telescopic Magnetic Pick-Up & Mirror Set



1.6KG PICK-UP

175-885mm
225-700mm
Extending

Ø10mm

Premier

- 7-Section stainless steel magnetic pick-up tool with textured grip and pocket-clip.
- Ø10mm Magnet with 1.6kg capacity.
- 5-Section stainless steel inspection mirror with textured grip and pocket-clip.
- Ø40mm Mirror is mounted on twin ball joints for maximum articulation.
- Lifetime guarantee*.
- **Model No. AK6527**

SPECIAL PRICE
\$79.95

Telescopic Magnetic Pick-Up Tool - 1.6kg Capacity



1.6KG PICK-UP

175-880mm
Extending

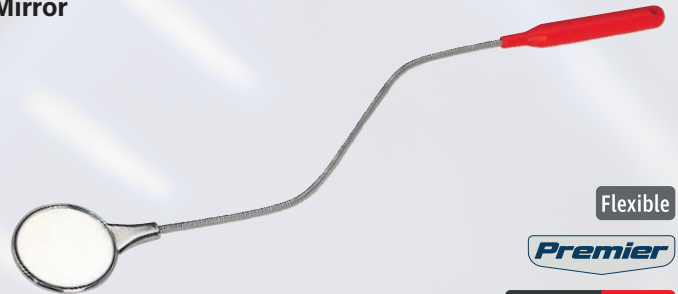
Premier

HEAVY DUTY

- Heavy-duty 7-section magnetic pick-up tool.
- Textured grip and pocket-clip.
- Ø10mm Magnet gives 1.6kg capacity.
- Minimum/Maximum Length: 175/880mm.
- Lifetime guarantee*.
- **Model No. AK6514**

SPECIAL PRICE
\$49.95

Ø60mm Flexible Shaft Inspection Mirror



Flexible

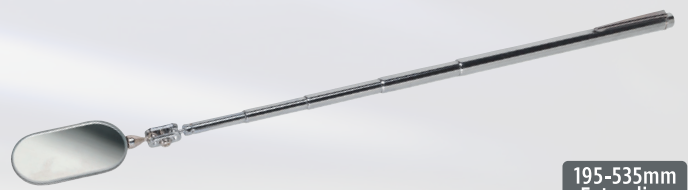
Premier

HEAVY DUTY

- Rubber grip and strong, spring steel flexible shaft.
- Ø60mm Mirror.
- Suitable for use in confined areas.
- Length: 485mm.
- Lifetime guarantee*.
- **Model No. AK6503**

SPECIAL PRICE
\$39.95

50 x 25mm Extending Articulated Inspection Mirror



195-535mm
Extending

Premier

- Chromed metal 5-section body with pocket-clip.
- 50 x 25mm Inspection mirror mounted on twin ball joints for maximum articulation.
- Minimum/Maximum Length: 195/535mm.
- Lifetime guarantee*.
- **Model No. AK6525**

SPECIAL PRICE
\$39.95

3pc 400mm Extra-Long Needle Nose Pliers Set



Extra-Long

Premier

- Manufactured from hardened and heat treated Chrome Vanadium steel.
- Finely ground heads with a fully polished finish.
- Serrated, machined jaws for a positive grip.
- Extra-long, slim design ideal for use in areas with limited access.
- Vinyl dipped handles for comfort and control.
- Supplied in storage tray.
- Lifetime guarantee*.
- Model No. AK8576

SPECIAL PRICE
\$245.95

3pc 335mm Double Joint Pliers Set



Premier

- Manufactured from hardened and tempered drop-forged Chrome Vanadium steel.
- Finely ground heads with a fully polished finish.
- Serrated, machined jaws for a positive grip.
- Long, slim double joint design.
- Ideal for use in areas with limited access while keeping handle spread to a minimum.
- Contents: Needle Nose Pliers, 45° Angle Needle Nose Pliers, Flat Nose Pliers.
- Lifetime guarantee*.
- Model No. AK8580

SPECIAL PRICE
\$229.95

3pc Quick Release Water Pump Pliers Set



Premier

- Manufactured from hardened and tempered drop-forged Chrome Vanadium steel.
- Push-button quick adjustment/release.
- Serrated jaws, induction-hardened 55-65 HRC.
- Dual material comfort grip handles and black oxide finish for corrosion resistance.
- Sizes: 200, 250, 300mm.
- Lifetime guarantee*.
- Model No. AK8380

SPECIAL PRICE
\$219.95

4pc High Leverage Pliers Set



Premier

- Contents: 190mm Heavy-Duty Side Cutters, 200mm Combination Pliers, 200mm Long Nose Pliers, 250mm Water Pump Pliers.
- Lifetime guarantee*.
- Model No. AK8378

SPECIAL PRICE
\$219.95

3pc Quick Release Locking Pliers Set

Quick Release



Premier

- Deeply serrated and hardened teeth grip the workpiece from any angle.
- Curved jaw design applies maximum pressure to all four corners of nut or bolt heads making it ideal for high torque applications.
- Heavily knurled adjustment screw for extra grip with greasy fingers.
- Jaw Capacity/Length: Curved Jaw - 30/140, 45/220mm, Long Nose - 60/210mm.
- Lifetime guarantee*.
- Model No. AK6863

SPECIAL PRICE
\$215.00

4pc 180mm Circlip Pliers Set



Premier

- Manufactured from hardened and tempered Chrome Vanadium steel.
- Spring loaded jaws and forged non-slip tips.
- Dual material comfort grip handles and black oxide finish for corrosion resistance.
- Capacities: 19-60mm each.
- Lifetime guarantee*.
- Model No. AK8457

SPECIAL PRICE
\$159.95

Sheathed Automatic Centre Punch



Premier

- Impact adjustment from 15 to 25kg.
- Simply push-down to release the spring.
- Tip hardened to 57-60 HRC.
- Ergonomic comfort grip handle.
- Length: 160mm.
- Lifetime guarantee*.
- Model No. AK91320

SPECIAL PRICE
\$89.95

6pc 200mm Parallel Pin Punch Set



MM

Premier

Long Style

- Hardened, tempered and fully polished Chrome Vanadium steel punches.
- Supplied with composite retainer.
- Sizes: 3, 4, 5, 6, 8, 10mm.
- Lifetime guarantee*.
- Model No. AK9128L

SPECIAL PRICE
\$99.00

21pc Punch & Chisel Set



MM

Siegen

- Manufactured from Chrome Vanadium steel, hardened and tempered for extra durability.
- Supplied in tool roll.
- Contents: Cold Chisels; 10 x 140, 13 x 150, 16 x 170, 19 x 175, 22 x 200, 25 x 250mm, Taper Punch; Ø1.5 x 140, Ø2.4 x 140, Ø3 x 140, Ø4 x 140, Ø5 x 140, Ø6 x 140mm, Pin Punch; Ø1 x 150, Ø2.4 x 150, Ø3 x 150, Ø4 x 150, Ø5 x 150, Ø6 x 150mm, Centre Punch; Ø6 x 100, Ø6 x 140, Ø8 x 115mm.
- Model No. S0805

SPECIAL PRICE
\$239.95

2.75lb Copper Faced Hammer with Hickory Shaft

Premier



- Malleable, extra heavy construction iron head fitted with two pure electrolytic copper faces.
- Replacement copper faces available.
- Lifetime guarantee*.
- **Model No. CFH03**

SPECIAL PRICE
\$149.95

4oz Ball Pein Pin Hammer with Hickory Shaft

Premier



- Drop-forged carbon steel head.
- Induction-hardened and tempered with polished face and cheek.
- Fitted with straight-grain hickory shaft.
- Manufactured in accordance with BS 876.
- **Model No. BPH04**

SPECIAL PRICE
\$33.95

2.8lb Dead Blow Hammer

Premier



- Shot-loaded head produces heavy, controlled and effective blows without rebound.
- TPR shaft and head with soft grip handle for comfort and control.
- Lifetime guarantee*.
- **Model No. DBH02**

SPECIAL PRICE
\$89.95

4lb Club Hammer with Fibreglass Shaft

Premier



- Drop-forged carbon steel head.
- Fitted with fibreglass shaft.
- Manufactured in accordance with BS 876.
- Weight: 1800g(4lb).
- Lifetime guarantee*.
- **Model No. CHF401**

SPECIAL PRICE
\$79.95

2lb Ball Pein Hammer with Hickory Shaft

Premier



- Drop-forged steel head manufactured in accordance with BS 876.
- High quality hickory shaft.
- Well balanced.
- Weight: 900g(2lb).
- Lifetime guarantee*.
- **Model No. BPH32**

SPECIAL PRICE
\$72.95

Cold Chisels With Grip



- High quality drop-forged steel cold chisels with octagonal shaft design.
- Black powder coated with polished tip for great resistance against corrosion.
- Fitted with comfort grip for greater comfort and control as well as protection against striking tools.
- Manufactured in accordance with BS 3066.

Model No	Size	Special Price
CC32G	19 x 250mm	\$29.95
CC36G	25 x 300mm	\$39.95

Extendable 600-915mm Adjustable Head Heavy-Duty Pry Bar

600-915mm Length

Extendable



Premier

Adjustable Head

HEAVY DUTY

- Heavy-duty hardened and tempered Chrome Vanadium steel extendable pry bar with blackened finish.
- Quick release locking mechanism retains extension at set increments giving twenty seven different shaft lengths from 600-915mm.
- Features 180° adjustable head, simply push-button to adjust then release to lock into position.
- Ideal for general force and alignment work.
- Lifetime guarantee*.
- **Model No. AK9138**

SPECIAL PRICE
\$189.95

4pc Heavy-Duty Pry Bar Set



Premier



ALWAYS WEAR SAFETY GOGGLES WHEN USING THESE TOOLS

HEAVY DUTY

- Heavy-duty, angled shafts.
- Chrome Molybdenum steel with blackened finish.
- Comfortable soft grip handles with hammer cap.
- Contents: 200, 300, 460, 610mm.
- Lifetime guarantee*.
- **Model No. AK9105**

SPECIAL PRICE
\$159.95

Ø3-36mm Rubber & Reinforced Hose Cutter



Ø3-36mm

Premier

- Powder coated aluminium body.
- Operates with a simple plier action.
- Heat treated stainless steel cutting blade.
- Locking mechanism for safe storage.
- Suitable for hoses from Ø3-36mm.
- Lifetime guarantee*.
- **Model No. HCA26**

SPECIAL PRICE
\$81.95

3-in-1 Butane Indexing Soldering Iron



- 3-in-1 Device that can be used for heating, soldering and shrinking.
- Fitted with indexing head for three different positions as well as magnetic stand.
- Powered by butane (lighter fuel) and features a piezoelectric ignition switch.
- Viewing window at bottom of device to monitor fuel.
- Flame temperature 1300°C, soldering temperature 450°C and hot air temperature of 600°C (Approximately).
- 60-75 Minute run time with 30ml fuel capacity.
- **Model No. AK2970**

SPECIAL PRICE
\$179.95

4pc Adjustable Wrench Set

150mm 200mm
250mm 300mm



- Hardened and heat treated high quality drop-forged steel.
- Precision ground, fully polished offset jaws with Metric calibration for accuracy.
- Black phosphate finish for long term corrosion resistance.
- Slim raised lip style handle with hanging holes for alternative storage.
- Set of four containing 150, 200, 250 and 300mm wrenches.
- Jaw Capacity: 19, 24, 27, 34mm.
- **Model No. AK9567**

SPECIAL PRICE
\$149.95

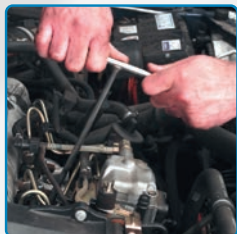
GripMAX® Bottle Openers



- Ergonomic polypropylene and TPV rubber soft grip handle.
- Includes hanging hole for alternative storage.

Model No	Colour	Special Price
AK4368	Red	\$12.95
AK4368HV	Hi-Vis Green	\$12.95

T-Handle Nut Drivers



MM



Model No. AK5826

- Heat treated Chrome Vanadium steel shafts with deep profile sockets.
- WallDrive® socket with hex flats for extra driving power.
- Lifetime guarantee*.

Model No	Size	Special Price
AK5821	8mm	\$44.95
AK5823	10mm	\$46.95
AK5826	13mm	\$49.95
AK5828	17mm	\$54.95

Disc Brake Opening Tool



- Wedge shaped tool ideal for expanding the gap between brake pads to speed up pad replacement.
- Features moulded rubber handle enabling extra grip.
- **Model No. SMC35**

SPECIAL PRICE
\$79.95

Pilot Screw Adjusting Tool



- 460mm Deep access tool, particularly suited to adjustment of motorcycle carburettors.
- 110° Angled head gives improved access to hard-to-reach areas.
- One turn of handle equals one turn of slotted blade.
- Blade tip height is adjustable allowing it to be set in place during operation.
- **Model No. MS013**

SPECIAL PRICE
\$109.95

Timing Chain Wear Indicator BMW Mini



- Allows checking of wear of the timing chain on a range of BMW Mini petrol engines with the minimum amount of dismantling.
- This saves a significant amount of time when checking for timing chain stretch and wear.
- **Model No. VSE2381**

SPECIAL PRICE
\$224.95

Auxiliary Belt Tensioner Wrench VAG 1.4 TSi/TFSi - Belt Drive



- Specially designed wrench to allow for access to the auxiliary belt tensioner where access is limited.
- 1.4 direct injection 4-cylinder TSi and TFSi BlueMotion engines.
- **Model No. VSE5047**

SPECIAL PRICE
\$135.00

HAND TOOLS/VEHICLE SERVICE

Flywheel Turning Wrench



- Locates in starter ring gear teeth.
- Spring loaded catch for ease of use.
- **Model No. VS175**

SPECIAL PRICE
\$69.95

4pc 3/8" Sq Drive Spark Plug Socket Set - Magnetic



3/8" Sq. Drive

Magnetic



- Forged, Chrome Vanadium steel, 3/8" Sq drive WallDrive® sockets, polished chrome finish.
- Magnetic plug retention and external hex.
- Sockets: 14, 16, 21mm, 16mm Thin-wall.
- Includes thin walled 16mm socket, for where clearance is tight.
- Lifetime guarantee*.
- **Model No. AK65561**

SPECIAL PRICE
\$129.95

17mm Multiple Angle Fuel Pipe Wrench - VAG



- Fuel pipe wrench, 17mm multiple angle with offset design.
- Suitable for removing and installing the fuel pipes on VAG TDi engines.
- Manufactured from Chrome Vanadium.
- **Model No. VSE5330**

SPECIAL PRICE
\$75.95

8-Function Professional Auto-Ranging Digital Multimeter



- High precision auto-ranging multimeter.
- Conforms to EN 61010-1 CATIII 600V safety requirements for electrical equipment for measurement, control and laboratory use.
- Temperature measurement capability, max/data-hold and auto-power-off function.
- Double moulded housing with soft grip case and large display for ease of use.
- Probe and lead storage and integral upright stand for use on the workbench.
- **Model No. TM102**

SPECIAL PRICE
\$279.95

Non-Ratcheting Crimping Tool



Non-Insulated



Insulated



- Crimps non-insulated terminals 10-14, 16-18 and 20-22 AWG wire.
- Crimps open barrel connectors 14-18 and 20-22 AWG wire.
- Crimps computer pins and sockets D-Sub 26-28 AWG wire.
- Crimps butt-insulated connectors 22-26 AWG wire.
- Crimps telephone piercing spade lugs 22-26 AWG wire.
- 3mm Steel construction with safety insulated handgrips.
- **Model No. AK3850**

SPECIAL PRICE
\$69.95

3pc Terminal Cleaner Set Diamond Grip



- Suitable for removing corrosion and enhance connectivity of wiring terminals.
- Durable abrasive diamond cleaning ends, for male/female blade type terminal connectors.
- Features a pivoting handle to allow tweezer action or single blade use.
- Set contains three sizes of blade.
- Abrasive Coating Length: 30mm.
- **Model No. VS9202**

SPECIAL PRICE
\$99.00

CAT IV 1000V High Voltage Tester Hybrid Vehicles



- Professional 2-pole voltage tester CAT IV 1000V for checking high voltage on electric/hybrid vehicles.
- Suitable for checking AC mains and DC power supplies between 6-1000V DC and 24-1000V AC.
- Can also be used for checking voltage and polarity on car batteries and continuity testing of DC circuits.
- Includes a self-test function and illumination light.
- EN61243-3, IP65, CE certified.
- Requires 2 x AAA 1.5V batteries (not included).
- **Model No. PPHY**

SPECIAL PRICE
\$399.00

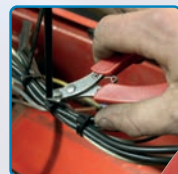
Terminal Tool - VAG



- Designed to remove terminals frequently used on many VAG group vehicles.
- **Model No. VS9200**

SPECIAL PRICE
\$44.95

110mm Cutting Nippers



LIFETIME GUARANTEE*

- Manufactured from high quality stainless steel with spring-return.
- Suitable for cutting soft wires and plastic e.g. cable ties.
- Sturdy handles for added grip and comfort.
- Maximum Cutting Capacity: Ø4.5mm.
- **Model No. AK2254**

SPECIAL PRICE
\$39.95

5pc Ignition Coil Puller Set - VAG



VAG



- Suitable for installation/removal of ignition coils and separating the HT leads from deep-seated spark plugs on VAG vehicles.
- Long shafts with composite T-style handle for added control and stability.
- Prevents damage to ignition coils whilst allowing faster removal.

• Model No. VS5294

SPECIAL PRICE
\$184.95

14mm 3/8" Sq Drive 12-Point Spark Plug Socket with Universal Joint



WALLDRIVE®

- Designed for use where plug clearance is tight.
- Standard depth, thin wall, 12-point 3/8" Sq drive 14mm socket with magnetic insert to retain spark plug.
- Features a universal joint for ease of access.
- Application: BMW.

• Model No. AK6569

SPECIAL PRICE
\$89.95



3/8" Sq. Drive



Magnetic

14mm 3/8" Sq Drive 12-Point Spark Plug Socket with Magnetic Retainer



WALLDRIVE®

- Designed for use where plug clearance is tight.
- Thin wall 12-point 14mm socket.
- Magnetic insert to retain spark plug.
- Application: BMW.

• Model No. AK6568

SPECIAL PRICE
\$39.95



3/8" Sq. Drive



Magnetic

22mm 1/2" Sq Drive Extra-Long Oxygen Sensor Socket

1/2" Sq. Drive

Oxygen Sensor



- Suitable for deep-seated and longer type oxygen sensors found on modern vehicles.
- Cut-out section enables socket to be fitted over wiring harness.
- Lifetime guarantee*.

• Model No. SX0221

SPECIAL PRICE
\$79.95

1.2m Telescopic Bonnet/Tailgate Support



Extendable

- Three tier telescopic aluminium tailgate/bonnet support with tough rubber pads at each end.
- Lock in any position with a simple twist.
- Also used for holding open doors, depressing clutch, brake or accelerator pedals.

• Model No. VS0140

SPECIAL PRICE
\$49.95

Adaptive Cruise Control Adjustment Tool - VAG



- For adjusting the adaptive cruise control (ACC) RADAR unit.
- Equivalent to VAG tool VAS6190/2.
- Manufactured from Chrome Vanadium with satin finish.
- Shaft Length: 230mm.
- Overall Length: 256mm.

• Model No. VS809

SPECIAL PRICE
\$33.95

36 Blade Combination Steel/Brass Feeler Gauge - Dual Marked



Premier

MM & IMP

- Imperial graduated, 36 blade, feeler gauge.
- Dual marked in Imperial and Metric.
- 30 Steel blades and 6 brass blades for non-magnetic applications on electronic ignition systems.
- Sizes: Steel: 0.002" to 0.035", Brass: 0.006" to 0.016".
- Blade dimensions 75 x 13mm.
- Lifetime guarantee*.

• Model No. VS513

SPECIAL PRICE
\$52.95

26 Blade Offset Feeler Gauge Dual Marked



Premier

MM & IMP

- Imperial graduated 26 blade feeler gauge.
- Sizes: 0.005" to 0.030"
- Dual marked in Imperial and Metric.
- Blade dimensions 75 x 13mm(45°-15mm offset).
- Lifetime guarantee*.

• Model No. VS515

SPECIAL PRICE
\$99.00

Exhaust Pipe Cutter Pliers



- Suitable for cutting exhaust pipes and steel or copper tubing up to Ø83mm.
- Plier design handles allow for even cutting pressure and enables access where space is restricted.
- 90° Handle movement produces a 360° cut.
- Handle Length: 200mm.
- Maximum Thickness: 2.5mm.

• Model No. VS16372

SPECIAL PRICE
\$189.95

32 & 36mm Viscous Fan Hub Tool



- Combination tool suitable for removing thermo-viscous fan hubs as fitted to BMW, Ford and Vauxhall/Opel vehicles.
- Sizes: 32, 36mm
- **Model No. VS0923**

SPECIAL PRICE
\$69.95

Viscous Fan Holding Tool



- Prevents fan from rotating, without risk of damaging fan (or fingers), when removing retaining nut.
- Use in conjunction with viscous hub spanner.
- Manufactured from hardened and tempered carbon steel.
- Vinyl dipped handle.
- **Model No. VS095**

SPECIAL PRICE
\$89.95

Hose Clip Pliers - Clic® Compatible



- Spring loaded pliers for fitting and removing Clic® and Clic-R® hose clips.
- Change from fit to remove (and back again) simply by turning the pliers over in your hand.
- PVC dipped handles for improved grip and comfort.
- **Model No. VS1664**

SPECIAL PRICE
\$55.00

Extra-Heavy-Duty Ear-Type Clip Pliers



**EXTRA
HEAVY
DUTY**

**LIFETIME
GUARANTEE***

- Steel jaws with PVC coated handles for added comfort.
- Each handle features a 1/2"sq drive for use with a torque wrench and breaker bar where vehicle maker demands specific band tensions.
- Suitable for all ear-type CVJ boot clips.
- Lifetime guarantee*.
- **Model No. VS1639**

SPECIAL PRICE
\$114.95

Extra-Heavy-Duty Ear-Type Clip Pliers



**EXTRA
HEAVY
DUTY**

- Steel jaws with PVC coated handles for added comfort.
- Features a double setting reaction bar, allowing for pre-tensioning for positive clamping.
- Mechanical lock avoids any damage to the collar at the end of the operation.
- Double-jointed pivot allows for minimal clamping effort.
- Suitable for medium sized closed and open ear-type clips.
- **Model No. VS1680**

SPECIAL PRICE
\$199.95

9pc Hose Clip Removal Tool Set



- All the hose clip tools you are likely to need in one case.
- Comprehensive set features heavy-duty construction with ratchet locking mechanism on most pliers.
- Vinyl dipped handles give additional comfort.
- **Model No. VS1662**

SPECIAL PRICE
\$399.00

Hose Clamp Pliers - Angled



- Specially designed jaws give excellent grip onto a wide range of vehicle hose clamps.
- 35° Angled head allows access into tight areas in the engine bay.
- Clever spring loaded locking function allows use one-handed.
- Jaw Capacity: 100mm.
- Length: 275mm.
- **Model No. VS1677**

SPECIAL PRICE
\$125.00

430mm Hose Clamp Pliers Double-Jointed



- Specially designed jaws give excellent grip onto a wide range of vehicle hose clamps.
- 430mm Double-jointed feature gives a long reach, allowing easy-access into places like bottom radiator hoses.
- Clever spring loaded locking function allows use one-handed.
- Jaw Capacity: 65mm.
- **Model No. VS1678**

SPECIAL PRICE
\$159.95

CVJ Boot/Hose Clip Tool with Cutter



- Quality made tool designed to aid fast tensioning and securing of CVJ boot banding material.
- Simply insert banding, tension using winding mechanism, and then pull over lever to cut the band to length.
- Fitted with large and comfortable handle.
- **Model No. VS1636**

SPECIAL PRICE
\$75.50

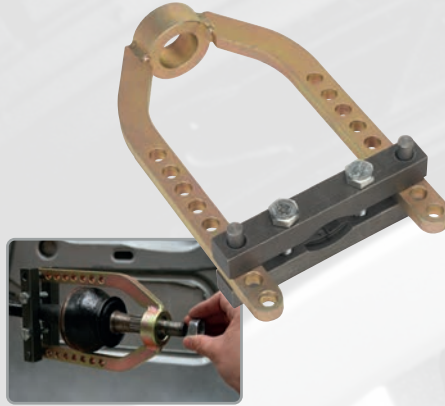
Hose Clamp Removal Tool



- For releasing HENN clamps used on coolant and turbo charger hoses.
- Applications: BMW, Citroen, Fiat, Ford, Kia, Lexus, Mazda, Mercedes, Nissan, Porsche, Peugeot, VAG, Vauxhall/Opel and Volvo.
- **Model No. VS1676**

SPECIAL PRICE
\$85.00

CVJ Removal Tool



- Quickly removes the CV joint from the drive shaft without damaging the joint, and keeps hands-free for releasing retaining circlip.
- Reduces risk of damage to transmission.
- Saves on labour time and suitable for most vehicles.
- **Model No. VS710**

SPECIAL PRICE
\$249.95

3/8" & 1/2" Sq Drive Oil Filter Strap Wrench Ø300mm Capacity



3/8" & 1/2"
Sq. Drive



- Satin finish cast steel body with 3/8" and 1/2" Sq drive.
- May also be used with a 21mm(13/16") spanner.
- Extra-wide Nylon webbing strap suitable for filters up to Ø300mm.
- Use with ratchet wrench.
- **Model No. AK6403**

SPECIAL PRICE
\$69.95

Ø60-105mm Oil Filter Chain Wrench



- Steel chain wrench with 180° pivoting handle suitable for filters with limited access.
- Heavy-duty chain with spring locking mechanism for added security.
- **Model No. VS936**

SPECIAL PRICE
\$189.95

3/8" & 1/2" Sq Drive Oil Filter Claw Wrench Ø63-103mm Capacity



3/8" & 1/2"
Sq. Drive

Ø63-103mm

- Satin finished carbon steel construction with 3/8" and 1/2" Sq drive.
- Also suitable for use with a 21mm spanner.
- Claws grip filter tighter as more torque is applied.
- **Model No. AK642**

SPECIAL PRICE
\$59.95

3/8" Sq Drive Magnetic Oil Filter Claw Wrench Ø60-93mm Capacity



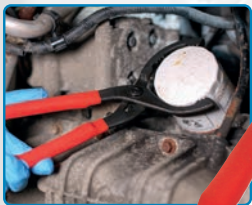
3/8"
Sq. Drive

Magnetic

- Satin finish steel construction with 3/8" Sq drive.
- Spring loaded claws automatically adjust to the size of the filter.
- Features magnets to help positioning on oil filter.
- **Model No. AK6432**

SPECIAL PRICE
\$69.95

Oil Filter Pliers Forged Ø54-89mm Capacity



- Forged pliers with chemically blackened finish.
- Serrated jaws and long handles for extra grip on oily filters.
- Dipped non-slip rubber grip handles for added comfort and control.
- **Model No. AK6412**

SPECIAL PRICE
\$55.95

Oil Filter Pliers Forged Ø60-108mm Capacity



- Forged pliers with chemically blackened finish.
- Serrated jaws and long handles for extra grip on oily filters.
- Dipped non-slip rubber grip handles for added comfort and control.
- Features angled jaws, for use in confined engine bays.
- **Model No. AK6411**

SPECIAL PRICE
\$64.95

Ø57-120mm Swivel Jaw Filter Pliers



Ø57-120mm

Premier

- Jaws swivel up to 90° to give access to awkwardly positioned oil and fuel filters.
- Chemically blackened finish to prevent corrosion and non-slip grip for added comfort and control.
- Capacity: Ø57-120mm.
- **Model No. AK6417**

SPECIAL PRICE
\$164.95

Ratchet Brake Piston Tool



- Designed for floating calipers fitted with single or twin piston.
- Also for fixed calipers fitted with twin or quad pistons.
- Ratchet mechanism provides speed and versatility saving time and money.
- Maximum Spread: 68mm.
- **Model No. VS0213**

SPECIAL PRICE
\$199.00

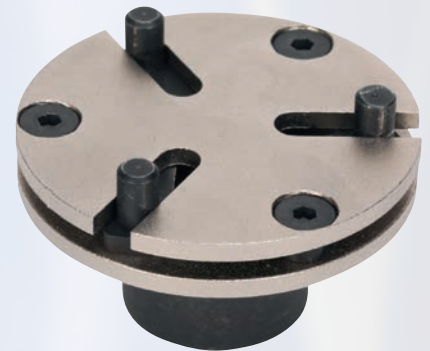
2-Pin 3/8" Sq Drive Adjustable Brake Wind-Back Adaptor



- Adjustable 2-pin brake wind-back adaptor suits a wide range of vehicle applications.
- 3/8" Sq Drive compatible with Model No's VS024, VS0244 and VS0286.
- **Model No. VS328**

SPECIAL PRICE
\$95.00

3-Pin 3/8" Sq Drive Adjustable Brake Wind-Back Adaptor



- Adjustable 3-pin brake wind-back adaptor suit a wide range of vehicle applications.
- Suitable for Electronic Park Brake (EPB) and VAG vehicles.
- 3/8" Sq Drive compatible with Model No's VS024, VS0244 and VS0286.
- **Model No. VS329**

SPECIAL PRICE
\$119.95

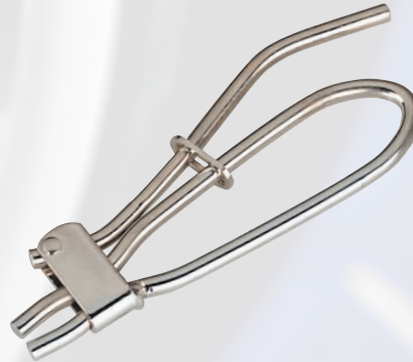
2pc Brake & Fuel Hose Pinch Tool Set



- Alloy body with steel clamp arm.
- Compact design allows use in confined spaces.
- Rounded jaw edges prevent damage to internal hose reinforcement.
- Suitable for use on fuel, vacuum and brake hoses.
- **Model No. VS037**

SPECIAL PRICE
\$42.95

Brake & Fuel Hose Pinch Tool Spring Type



- Completely or partially seals flexible brake, fuel and vacuum lines.
- Smooth rounded jaw edges prevent damage to internal hose reinforcement.
- Quick and simple-to-use.
- All steel construction with sliding lock collar.
- **Model No. VS034**

SPECIAL PRICE
\$41.95

Brake Pipe Cutter



- Patented design ensures that the spring mechanism maintains the correct cutting pressure on the pipe at all times.
- Features a smooth screw action and nickel-plated blade for increased cutting performance.
- **Model No. VS0350**

SPECIAL PRICE
\$109.95

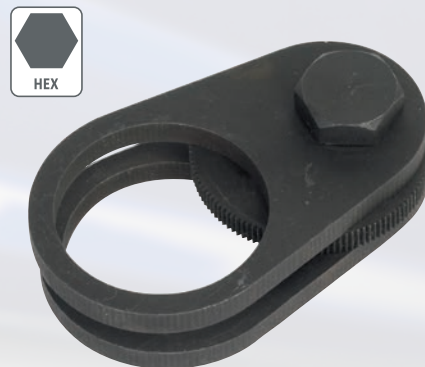
4pc 1/2" Sq Drive Impact Wheel Nut/Removal Flip Socket Set



- Flip socket set featuring wheel nut socket one end and fluted socket the other, for removing locking or rounded off wheel nuts.
- Attach the 75mm extension bar and slip on one of the double end impact tools.
- Simple and fast interchange, pull socket off bar, flip 180°, put it back on.
- High quality Chrome Molybdenum impact sockets with heat treatment and anti-corrosion finish.
- **Model No. SX271**

SPECIAL PRICE
\$249.95

Steering Rack Knuckle Tool



- Suitable for the fast and easy removal of the steering knuckle.
- Fits racks with hex drive, two flats and round ends.
- Ideal for vehicles with limited access and avoids the need to remove the rack assembly.
- Suitable for steering rack knuckles with a diameter of Ø33-41mm.
- **Model No. VS4000**

SPECIAL PRICE
\$99.95

Steering Rack Knuckle Tool



- Suitable for fast and easy removal of the steering knuckle.
- Fits racks with hex drive, two flats and round ends.
- Ideal for vehicles with limited access and avoids the need to remove the rack assembly.
- Suitable for steering rack knuckles with a diameter of Ø40-54mm.
- **Model No. VS4004**

SPECIAL PRICE
\$139.95

VEHICLE SERVICE

52mm Hub Nut Box Spanner Land Rover



- Ideal for removing and refitting the wheel hub retaining nuts and adjusting the wheel bearing free play.
- Suitable for Land Rover taper roller bearings.
- Use with bar through the Ø14mm cross-drilled holes.

SPECIAL PRICE
\$33.95

Ball Joint Splitter



- Forged steel body with chemically blackened thrust and adjustment screws for corrosion resistance.
- Fully adjustable.
- Jaw Capacity: 20mm.

SPECIAL PRICE
\$99.00

Composite Creeper - Hi-Vis Green



- One-piece, moulded high-impact polymer creeper.
- Two integral tool trays.
- Padded headrest.
- Low profile.
- Six Ø75mm swivel castors.
- Size (L x W x H): 1000 x 480 x 115mm.
- Max. weight capacity: 135kg

SPECIAL PRICE
\$199.00

Professional Coil Spring Compressor Set - Right-Hand/Left-Hand



- Suitable for MacPherson strut coil springs.
- Supplied with five pairs of different sized interchangeable yokes, for right and left-handed coil springs.
- Plastic yoke protectors that protect the spring coating from damage, which can invalidate the vehicle manufacturer's guarantee.
- Safety yokes carefully shaped to stop the spring bowing while under compression.

SPECIAL PRICE
\$1,595.00

Hydraulic/Manual Ball Joint Splitter Light Commercial

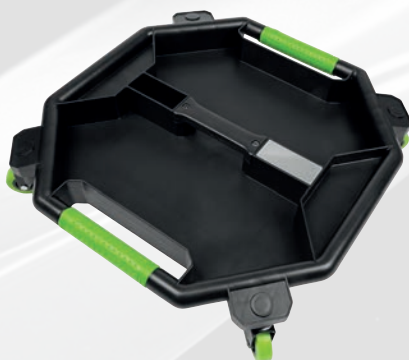


1.5tonne **Hydraulic**

- Forged steel body, ball joint splitter suitable for light commercial vehicles.
- Specially designed to be operated manually or by 1.5tonne hydraulic ram supplied.
- Features a step down thread adaptor that allows fitting of the manual thrust screw.

SPECIAL PRICE
\$399.00

Creeper Tool Tray - Hi-Vis Green



- Features five compartments to hold and organise your tools and fasteners.
- Two large 5cm deep 39 x 16cm compartments, two 2.5cm deep 18 x 5cm compartments and a 5cm deep 8 x 4cm compartment.
- 360° Plastic swivel wheels are durable and smooth over workshop floors.
- Features metal plate to attach magnetic work light.

SPECIAL PRICE
\$159.95

Heavy-Duty Wiper Arm Puller

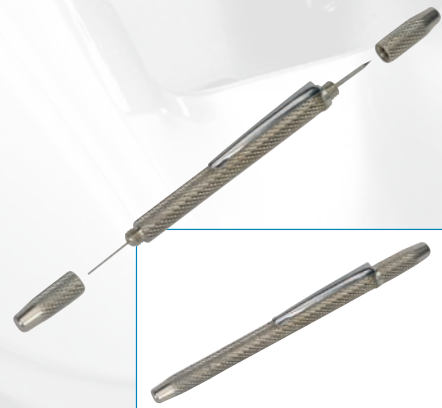
HEAVY DUTY



- Heavy-duty construction with locking feature allowing secure fastening to the wiper arm before commencing pull.
- With swivel mounted thrust bearing and tommy bar, the tool releases the most stubborn wiper arms.
- Also suitable for battery terminal and alternator bearing removal.
- Maximum Opening: 28mm.
- Maximum Collar Size: 43mm.

SPECIAL PRICE
\$79.95

Washer Jet Tool



- Compact, double end tool with pocket-clip.
- Screwed caps house a pointed scribe for cleaning and clearing washer jets at one end and finer probe for adjusting position of jets at the other.
- Heavily knurled body for sure handling.
- Overall Length: 104mm.

SPECIAL PRICE
\$29.95

Creeper Tool Tray - Red



- Features five compartments to hold and organise your tools and fasteners.
- Two large 5cm deep 39 x 16cm compartments, two 2.5cm deep 18 x 5cm compartments and a 5cm deep 8 x 4cm compartment.
- 360° Plastic swivel wheels are durable and smooth over workshop floors.
- Features metal plate to attach magnetic work light.

SPECIAL PRICE
\$159.95

Flexible Magnetic Pick-Up Tool 100g Capacity



Ø4mm

100g

Magnetic

- Ø4mm head allows use in cylinder heads and glow plug apertures.
- Length: 400mm.
- Pick-up capacity: 100g.
- Rubber grip and precise handle shape help make small movements easier.
- Flexible magnetic pick-up tool perfect for accessing hard-to-reach areas.
- **Model No. VS6511**

SPECIAL PRICE
\$39.95

Razor Blade Scraper



- Scraper with soft grip handle and hanging hole.
- Suitable for removing adhesive or paint from glass or metal surfaces.
- Pack of five replacement razor blades - Model No. AK867/1.
- **Model No. AK52504**

SPECIAL PRICE
\$52.95

3pc Rigid Blade Scraper Set



- 1.8mm Ultra-stiff, hardened stainless steel scraper blades suitable for numerous workshop and bodyshop applications including gasket scraping and windscreen preparation.
- **Model No. AK523**

SPECIAL PRICE
\$89.95

Long Reach Razor Scraper



- Suitable for scraping gaskets and also for removing labels, stickers and overspray from car windows.
- Safe storage of spare blades in handle.
- Supplied with three razor and three plastic blades.
- Length: 280mm.
- **Model No. VS500**

SPECIAL PRICE
\$29.95

2pc Hose Removal Hook Set



- Ideal for the removal of coolant hoses, O-rings and seals.
- **Model No. VS352**

SPECIAL PRICE
\$42.95

4pc Mini Hook & Pick Set



**LIFETIME
GUARANTEE***

- Suitable for removal of bushings, cotter pins, O-rings and seals.
- Contents: Straight, Right Angle, Half-round, Swan Neck.
- Length: 165mm.
- **Model No. AK5214**

SPECIAL PRICE
\$49.95

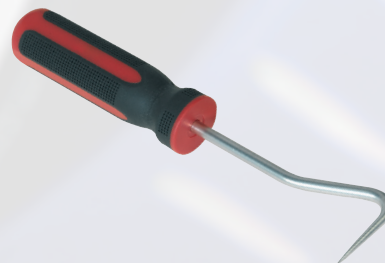
6pc Extra-Long Pick & Hook Set



- Six long reach picks with black finished steel shafts.
- Contents: Straight, Right Angle, Half-Round, Swan Neck, 45°/90° Tip, 40°/45° Tip.
- Suitable for pin/clip picking and the removal of O-rings and seals.
- Length: 235mm.
- **Model No. AK5215**

SPECIAL PRICE
\$75.95

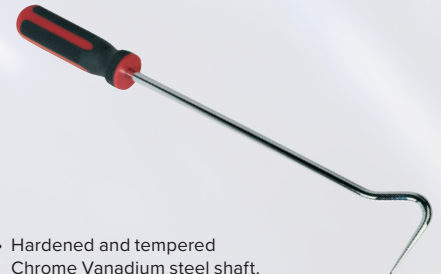
Curved Rubber Hook Tool



- Hardened and tempered Chrome Vanadium steel shaft.
- Curved head for smooth operation in both directions.
- Suitable for windscreen replacement applications.
- **Model No. WK0310**

SPECIAL PRICE
\$32.95

Long Curved Rubber Hook Tool



- Hardened and tempered Chrome Vanadium steel shaft.
- Features textured comfort grip handle.
- Extra-long shaft with curved head for smooth operation in both directions.
- Suitable for windscreen replacement applications.
- **Model No. WK0313**

SPECIAL PRICE
\$37.95

Door Trim Clip Tool



- Suitable for the removal of door trim clips on most vehicles.
- Features coated U-profile tip to reduce the risk of damage to surrounding trim and contoured textured comfort grip handle.
- **Model No. RT007**

SPECIAL PRICE
\$49.95

220mm Trim Clip Tool



- Designed to remove trim clips on most vehicles.
- Features a 70° heel for extra leverage or for use in confined spaces.
- **Model No. RT008**

SPECIAL PRICE
\$17.95

Spring Hose Clip Tensioner Tool



- Locks in place for safe clip removal/refitting.
- Ideal for use in confined areas.
- Single-handed use.
- Range: 5-55mm.
- **Model No. VS1575**

SPECIAL PRICE
\$159.95

42pc Re-Threader Master Kit Metric/UNF/UNC



MM IMP

- Taps and dies are suitable for chasing out damaged threads and the removal of nicks and burrs without undercutting good threads.
- Thread file restores damaged external threads on any diameter, right or left-hand.
- Model No. AK311

SPECIAL PRICE
\$429.95

1000ml Metal Oil Can with Flexible Spout



- Metal can with flexible spout and thumb operated lever action.
- Capacity: 1000ml.
- Model No. TP1000

SPECIAL PRICE
\$42.95

350ml Oil Inspection Syringe



- Multipurpose syringe with Viton® seal, ideal for the transfer of oils/fluids to and from vehicle components such as gearboxes and differentials.
- Translucent body allows easy inspection of oils and fluids.
- Includes twist shut-off valve to stop fluid escaping.
- Fluid Compatibility: AdBlue®, Antifreeze, Brake Fluid, Diesel, Oil, Water.
- Model No. VS407

SPECIAL PRICE
\$119.95

Metal Funnels with Flexible Spout & Filter



- Manufactured from tin-plate with handles for safe and easy pouring.
- Removable brass filter.
- High rim acts as splash guard.
- Supplied with fixed and detachable, flexible spout.
- Suitable for industrial and workshop use.

Model No	Size	Special Price
FM16F	Ø160mm	\$99.00
FM20F	Ø200mm	\$119.95

2pc Universal Oil Funnel



- Specially designed funnel with a clamp.
- Adjustable for different pipe widths.
- Transparent lower chamber to watch the flow of fluid.
- Funnel diameter Ø124mm.
- Will fit pipes 22mm to 72mm wide.
- Model No. UOF2

SPECIAL PRICE
\$79.95

2L Measuring Funnel with Lid and Base



- Graduations that can be used for transferring a measured quantity of fluid without any spills or splashes.
- Simple press of a lever dispenses liquid through a built-in metal sieve to ensure contaminant free transfer.
- Replace funnel back into base in between use, no need to pour unwanted liquids back into original storage container.
- Recommended for use with oils and other similar viscosity liquids.
- Do not use with water based media.
- Model No. MF2/BC

SPECIAL PRICE
\$149.95

Ø160mm Funnels



- Polyethylene funnels resistant to oil, fuel and some acids.
- Ideal for vehicles with smaller diameter unleaded filler necks.
- Fitted with handle and removable brass filter.

Model No	Type	Special Price
F16	Fixed Offset Spout & Filter	\$39.95
F16F	Flexible Spout & Filter	\$35.95

Fluid Transfer Pump



- Brass constructed pump suitable for syphoning a variety of fluids including oils, coolants, transmission fluid, diesel and antifreeze.
- Fitted with removable neoprene end caps.
- Supplied with 1m x 6mm intake hose and 600mm x 12mm discharge hose.
- Ideal for draining gearboxes and differentials.
- Delivers approximately 100ml per stroke.
- Model No. TP501

SPECIAL PRICE
\$145.00

Bulldozer Yard Dustpan & Brush Set



- Hard-wearing, dual purpose, split-tip polypropylene and PVC fibres ideal for indoor and outdoor surfaces.
- Stiff inner fibres sweep concrete, asphalt and other rough surfaces.
- Brush locks on to pan for easy storage.
- Large industrial pan with a rubber squeegee edge to ensure all media can be swept with ease.
- Model No. BM04HX



SPECIAL PRICE
\$75.95

205L Drum Grab - 350kg Capacity



- Lifts open or closed, loaded, steel drums with the aid of an overhead hoist.
- Keeps drum in vertical position reducing spillage.
- Heavy-duty steel construction.
- Suitable for 205L drums.
- **Model No. DG01**

SPECIAL PRICE
\$399.00

Magnetic Stainless Steel Parts Strainer



- Stainless steel strainer ideal for storing nuts, bolts, parts or tools whilst cleaning.
- Magnetic base helps secure the strainer safely.
- Diameter: Ø270mm.
- **Model No. SMS011**

SPECIAL PRICE
\$49.95

260mm Tin Snips

LIFETIME GUARANTEE*

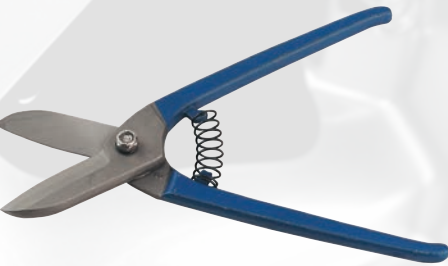


- One-piece, drop-forged handles with induction-hardened blades to 55-60 HRC.
- Cushion grip handle.
- Cuts up to 0.8mm cold rolled steel or 0.45mm stainless steel.
- Lifetime guarantee*.
- **Model No. AK6911**

SPECIAL PRICE
\$72.95

250mm Spring Loaded Tinman's Shears

LIFETIME GUARANTEE*



- One-piece, drop-forged blades with spring loaded handles.
- Suitable for cutting narrow gauge ferrous and non-ferrous metal sheet.
- Capacity: 0.8mm, Overall Length: 250mm.
- Lifetime guarantee*.
- **Model No. AK6910**

SPECIAL PRICE
\$39.95

High Leverage Aviation Tin Snip Set



LIFETIME GUARANTEE*

- Drop-forged, Chrome Molybdenum, tempered steel blades with serrated jaws.
- Self-opening, spring action handles with composite, contoured, colour-coded grips with safety catch.
- Lifetime guarantee*.
- **Model No. AK69073**

SPECIAL PRICE
\$169.95

Portable Soda Blasting Gun



- Suitable for controlled removal of paint, mould, carbon, grease and rust.
- When adjusted correctly, is particularly useful in areas where less aggressive cleaning is required, such as around windows (without etching the glass) and even for stripping paint from wooden furniture.
- After blasting, the remaining surface will inhibit rust for up to six weeks.
- Adjustable nozzle allows control from narrow to wider stream.
- **Model No. PSB05**

SPECIAL PRICE
\$229.95

Heavy-Duty Compact Riveter with Collection Bowl



HEAVY DUTY

- Industrial grade tool for use in garages, agriculture and general workshops.
- Short-arm design providing effortless functionality and access to restricted space to set rivets up to 6.4mm.
- Supplied with five interchangeable colour-coded nozzles for all popular rivet sizes.
- Accepts aluminium, steel and stainless steel rivets in the following sizes: Metric; 2.4, 3.2, 4, 4.8, 6.4mm, Imperial; 3/32", 1/8", 5/32", 3/16", 1/4".
- Features special profile nozzle for structural rivets and a built-in mandrel collector.
- **Model No. AK3982**

SPECIAL PRICE
\$219.95

Quick Action Riveter



- Aluminium head with steel 3-piece jaws for aluminium, steel and stainless steel rivets.
- Patented design allows one-handed fast operation.
- Suitable for repetitive riveting tasks.
- Supplied with four nozzles.
- Accepts 2.4mm(3/32"), 3.2mm(1/8"), 4mm(5/32"), 4.8mm(3/16").
- **Model No. AK3990**

SPECIAL PRICE
\$139.95

3m 5-Sided Flo-Thru Brush with Telescopic Handle



Telescopic 1.3-3m

- Manufactured from tough, lightweight structural plastic that will not crack, bend or break.
- Super-soft synthetic bristles are safe to use on any surface.
- Leak resistant aluminium handle with flo-thru feature gives fast and thorough cleaning.
- Handle Extension: 1300-3000mm.
- Replacement flo-thru brush head available - order Model No. CC953BH.
- **Model No. CC953**

SPECIAL PRICE
\$169.95

Ø75mm Air Cut-Off Tool

Ø75mm



- Versatile tool, suitable for cutting car panel thickness material and exhaust brackets.
- Fitted with metal safety guard and throttle safety device to prevent accidental operation.
- Cutting disc not included.
- Order Model No. PTC/3C.
- **Model No. SA25**

SPECIAL PRICE
\$149.95

Air Needle Scaler - Pistol Type



- Pistol type scaler suitable for cleaning heavy paint and rust scale from metal surfaces.
- Removable needle head allows use as a standard air hammer but requires additional chisel set and spring retainer (not included).
- Features variable speed trigger control.
- Replacement needle sets available.
- **Model No. SA50**

SPECIAL PRICE
\$319.95

42pc Air Angle Die Grinding/Sanding Kit



Ø50mm & Ø75mm

Generation

- Suitable for die grinding, sanding or panel preparation.
- 90° Air Angle Die Grinder (Model No. GSA674).
- 360° Rotating exhaust.
- Includes a range of die grinding points, sanding rolls and Ø50/75mm preparation pads.
- Replacement components readily available.
- **Model No. GSA674K**

SPECIAL PRICE
\$399.95

3/8" Sq Drive Super Stubby Air Ratchet Wrench

2 YEAR GUARANTEE*



3/8" Sq. Drive

Stubby

Premier

- Ultra-compact air ratchet wrench fits in the palm of the hand.
- Perfect for working around tightly-packed engine compartments.
- Ratchet yoke designed and manufactured to provide additional strength.
- Rear exhaust with baffle reduces noise.
- Overall Length: 125mm.
- **Model No. SA633**

SPECIAL PRICE
\$199.27

Ø10mm Air Angle Drill with Keyless Chuck



Ø10mm

Generation

- 90° Angle is ideal for drilling in hard-to-reach areas.
- Supplied with Ø10mm Jacobs keyless chuck for fast bit changes.
- Directional, low noise air exhaust can be rotated 360°.
- Contoured composite handle reduces effects of chill and vibration.
- Fitted with safety trigger to prevent inadvertent operation.
- **Model No. GSA231**

SPECIAL PRICE
\$239.95

Angle Driver



- Allows access with a power drill/driver to awkwardly positioned fixings.
- Suitable for 6mm hex bits and socket adaptors.
- Magnetic bit retention.
- **Model No. AK2104**

SPECIAL PRICE
\$49.95

Air Needle Scaler - Composite Pistol Type

Premier



WEB VIDEO

2 YEAR GUARANTEE*

SPECIAL PRICE
\$489.95

- Suitable for cleaning heavy paint and rust scale from metal surfaces.
- Composite housing protects user from chill and helps to reduce vibration.
- Soft grip handle and in-line handle provide added comfort and control.
- Replacement needle sets available.
- **Model No. SA660**

Ø75mm Air Cut-Off Tool



Composite

Ø75mm

Premier



2 YEAR GUARANTEE*

WEB VIDEO

SPECIAL PRICE
\$349.95

- Composite cover moulded around lightweight aluminium alloy housing reduces effects of chill on operator's hands and provides added control.
- Air motor with quality bearings for smooth and powerful operation.
- Exhaust outlet adjusts 360°, keeping airflow away from operator.
- Fitted with metal safety guard and safety trigger to prevent inadvertent operation.
- Suitable for the professional workshop.
- **Model No. SA650**

3W SMD LED Rechargeable Ultraviolet Leak Detection Torch



Ultraviolet

Lithium RECHARGEABLE

- Ideal for detecting leaks in air conditioning and cooling systems with the use of fluorescent dye (not included).
- Illumination can be adjusted from spotlight to wide area, by simple push/pull action of the head.
- Features lightweight aluminium housing.
- Battery charged via USB lead (supplied).
- For best results and protection, we suggest this product is used with Model No. SSP46 Light Enhancing Safety Spectacles.
- **Model No. VS6021**

SPECIAL PRICE
\$79.95

6W COB & 1W SMD LED Rechargeable Slim Inspection Light

COB LED

SMD LED



Lithium RECHARGEABLE

550 LUMENS

- Slimline foldout inspection light for use in confined spaces with its slim 9mm thickness.
- Inspection arm can be rotated 180° and folded.
- Features 1 COB LED, which produces up to 550 lumens and a 1W SMD LED on the end for use as a directional torch.
- Main light has two different lighting modes High/Low (550lm/220lm) and the SMD spotlight which has one setting at 80lm.
- Suitable for hands-free operation with a magnet and a hanging hook.
- Powered by a 3.7V 2Ah rechargeable Lithium-ion battery, which lasts up to 8 hours.
- Supplied with USB charging lead.
- **Model No. LED186**



SPECIAL PRICE
\$149.95

Collapsible Magnetic Parts Tray Set



Magnetic

- Manufactured from oil resistant ABS +Silica gel with five small locating magnets.
- Ideal for storing nuts, bolts, screws, washers and sockets during disassembly/assembly.
- Attaches to any ferrous surface.
- Suitable for dismantlers, recovery vehicles and engine re-builders. Retracts flat for easy storage.
- Open Dimensions per tray (W x D x H): 110 x 110 x 50mm.
- Collapsed Dimensions per tray (W x D x H): 110 x 110 x 20mm.
- **Model No. APCSTS**

SPECIAL PRICE
\$55.00

2 COB & 1 SMD LED Rechargeable Slim Folding Pocket Lights



Lithium RECHARGEABLE

DAYLIGHT EFFECT CRI 80



200 LUMENS

COB LED

SMD LED

- Slimline pocket lights for use in confined spaces.
- Inspection arm can be folded 180° for hands-free use.
- Super bright COB and SMD LED, 6000-7000k, 80+CRI.
- Lumens Output and Operating Time: Top Spotlight; (80lm)/(3hr runtime), Front Light (200/100lm); (1.5hr/3.5hr runtime), Rear Light; (180lm)/(2hr runtime).
- Rechargeable high quality 3.7V 700mAh Lithium-ion battery with a charging time of 2.5 hours.
- Flashing warning light when battery is low.
- Includes 1 LED indicator - flashes green for charging, continuous green for full charge.
- IK07 and IP54 rated.
- Charges via a USB Type-C lead. (Supplied with USB Type-C Cable).

Model No	Colour	Special Price
LED01B	Blue	\$125.00
LED01R	Red	\$125.00
LED01G	Green	\$125.00

3-48V Integrated Test Light/Voltmeter



3V to 42V

- Identifies polarity of circuit being tested on LCD display, red for positive and green for negative.
- LCD meter draws minute currents making this tool safe to use around delicate electronic components.
- With a range of 3-48V DC, this tool is suitable for motorcycle, car, hybrid and commercial vehicles.
- Supplied with 3m coiled cable and insulated crocodile earth clamp.
- Do not use on air bags.
- **Model No. AK4012**

SPECIAL PRICE
\$139.95

Power Tool Storage Rack



- Wall mounting rack specifically designed for the storage of power tools.
- Stores up to five power tools.
- Shelf space for power tool battery chargers.
- Open fronted bays make tools easily accessible.
- Supplied flat-packed.
- **Model No. PTRSR5**

SPECIAL PRICE
\$229.95

310 x 115mm Magnetic Tool Storage Tray



- Heavy gauge steel construction.
- Powerful cushioned magnets adhere to any ferrous surface.
- Ideal for use with toolboxes.
- Size (W x D x H): 310 x 115 x 30mm.
- Holds up to 3500g.
- **Model No. APTT310**

SPECIAL PRICE
\$89.95

440mm Laptop & Tablet Stands



- Suitable for use with our range of Superline Pro® and Premier Rollcabs (excluding AP24 range).
- Adjustable height, angle and position.
- Ideal for the automotive technician.

Model No	Colour	Special Price
APLTS	Red	\$239.95
APLTSB	Black	\$239.95

Soft Jaws for Vices



- Suitable for protecting soft materials that require clamping in a vice.
- Aluminium body with soft rubber front helps prevent markings or damage to the workpiece.
- Fitted with heavy-duty magnetic strip on the back to adhere to the vice jaws preventing movement when clamping.

Model No	Size	Special Price
VSJ100	100mm	\$49.95
VSJ150	150mm	\$69.95

190mm Double End Engineer's Scriber



LIFETIME GUARANTEE*

- Precision manufactured tool with hardened steel tips.
- Features straight and 90° tips with knurled body.
- Model No. AK9751

SPECIAL PRICE
\$19.95

10pc Needle File Set



LIFETIME GUARANTEE*

- Popular sized needle files.
- Vinyl dipped handle shafts for extra comfort.
- Average Overall Length: 140mm.
- Model No. AK576

SPECIAL PRICE
\$29.95

9pc Stud Extractor Set



3/8" & 1/2" Sq. Drive MM

- Suitable for the removal of broken studs and bolts.
- Left-hand tapered spiral design, tightens into pre-drilled stud/bolt as more torque is applied.
- Contents: 3/8" Sq/17mm Hex Drive; 2, 3, 4, 5, 6mm (36mm Length), 1/2" Sq/22mm Hex; 8, 10, 12, 14mm (45mm Length).
- Supplied on socket rail.
- Model No. AK7222

SPECIAL PRICE
\$229.95

3pc Tungsten Carbide Rotary Burr Set



Ø10mm

- 3-Piece set of Ø10mm No. 6 cut (universal) Tungsten Carbide burrs.
- Head Shapes: Cylindrical Front End Cut, Rotary Ball Nose, Arc Pointed Nose.
- For use on soft and hard metals, including welded seams.
- Supplied in plastic storage box.
- Model No. SDBK3

SPECIAL PRICE
\$189.95

5pc Tungsten Carbide Rotary Burr Set



Ø10mm

- 5-Piece set of Ø10mm No. 6 cut (universal) Tungsten Carbide burrs.
- Head Shapes: Cylindrical Front End Cut, Rotary Ball Nose, Arc Pointed Nose, Arc Round Nose, Conical Ball Nose.
- For use on soft and hard metals, including welded seams.
- Supplied in plastic storage box.
- Model No. SDBK5

SPECIAL PRICE
\$299.95

25pc Stud Extractor Set

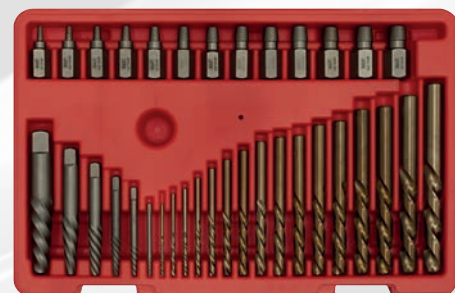
MM



- Suitable for the removal of broken studs and bolts.
- Supplied with centring pilots for Ø4.75-9.5mm studs, drills, extractor shafts and nuts.
- Ideal for engine manifold studs.
- Model No. VS7233

SPECIAL PRICE
\$279.95

35pc Master Extractor Set



- Spiral flute extractors for use with bolts/fasteners requiring less torque.
- Left-handed cobalt drill bits, used to drill pilot holes (reversible drill is required).
- Contents: Multi-Spline Extractors: 1/8", 5/32", 3/16", 7/32", 1/4", 9/32", 5/16", 11/32", 3/8", 13/32", 7/16", 15/32", 1/2", Spiral Flutes: #1, #2, #3, #4, #5, #6, HSS Cobalt Drill Bits: 5/64", 7/64", 1/8", 5/32", 3/16", 7/32", 1/4", 9/32", 19/64", 5/16", 11/32", 3/8", 13/32", 7/16", 15/32", 1/2".
- Model No. AK8186

SPECIAL PRICE
\$379.95

4pc 1/2" Sq Drive Stud Extractor Set

1/2" Sq. Drive MM

LIFETIME GUARANTEE*



- Socket type extractors manufactured from Chrome Molybdenum steel heat treated and chrome plated for corrosion resistance.
- Suitable for use with 1/2" Sq drive ratchet or spanner.
- Sizes: 6, 8, 10, 12mm.
- Model No. AK723

SPECIAL PRICE
\$175.95

Safety Glasses with Flexi Arms



- Sports style, soft durable flexi arms.
- Soft, comfortable nose bridge.
- Conforms to BS EN 166/1F.

Model No	Type	Special Price
9213	Clear Lens	\$16.95
9215	Amber Lens	\$16.95

Ear Defenders Cat 3 - Standard



- Lightweight yet rugged construction offering protection to BS EN 352.1.
- SNR Rating 27dB.
- Adjustable swivel cups for optimum comfort and safety.
- Fully approved to protect against high noise levels in most working environments.
- **Model No. 406**

SPECIAL PRICE
\$22.95

Deluxe Ear Defenders - Folding



- Lightweight, yet rugged construction, certified to BS EN 352-1:2002 standard.
- Hearing protection level in excess of the standard, with an SNR of 32dB.
- Fully adjustable ear cups to ensure a precise seal against the head.
- Arms fold in for easy storage.
- Fully approved to protect against high noise levels in most working environments.
- **Model No. SSP19F**

SPECIAL PRICE
\$49.95

355mm Kevlar® Hot Sleeve



- Manufactured to CAT 2 BS EN 388 and BS EN 407 from 100% DuPont Kevlar®.
- Designed for use in engine bays to prevent cuts to forearms and burns from exhausts and other hot components.
- Thumb slot design ensures sleeve will stay in position.
- **Model No. SSP36**

SPECIAL PRICE
\$55.00

HSS Tri-Point M2 Drill Bit Sets



- Tri-point, self-centring tips allow for a quicker cut.
- Three flattened shank for improved chuck grip in sizes 5.5mm and above.
- Engineered design allows drilling on curved surfaces.
- Supplied in a plastic storage case with rubber corner protectors.

Model No	Set Qty	Sizes	Special Price
AK4705	19pc	Ø1-10mm	\$199.00
AK4706	25pc	Ø1-13mm	\$379.95

3pc Double Flute HSS 4341 Step Drill Bit Set



- Three high-speed HSS 4341 double flute step drills.
- Double straight flutes for efficient swarf clearance.
- Allows clog-free, precision drilling of 18 different size holes with just three bits.
- Size #1: Ø4-12mm.
- Size #2: Ø4-22mm in 2mm increments.
- Size #3: Ø4-30mm in 2mm increments.
- **Model No. AK4746**

SPECIAL PRICE
\$219.95

19pc HSS Cobalt Fully Ground Drill Bit Set



- Fully ground HSS with 5% Cobalt makes these ideal for drilling extra hard materials.
- 135° Split point tip enables bits to bite workpiece quickly, reducing the need for centre mark.
- Drills can be resharpened without affecting their performance.
- Sizes: Ø1-10mm in 0.5mm increments.
- **Model No. AK4701**

SPECIAL PRICE
\$199.00

25pc HSS Cobalt Fully Ground Drill Bit Set



- Fully ground HSS with 5% Cobalt makes these ideal for drilling extra hard materials.
- 135° Split point tip enables bits to bite workpiece quickly reducing the need for centre mark.
- Drills can be resharpened without affecting their performance.
- Sizes: Ø1-13mm in 0.5mm increments.
- **Model No. AK4702**

SPECIAL PRICE
\$399.00



WE HAVE A **HUGE** RANGE OF SOCKET SETS AND INDIVIDUAL SOCKETS!

AVAILABLE AS SHORT OR DEEP

1/4" Sq. Drive **3/8"** Sq. Drive **1/2"** Sq. Drive **3/4"** Sq. Drive

STANDARD OR IMPACT SOCKETS

ASK YOUR DRIVER TODAY



Sealey Ltd is one of the largest professional tool and workshop equipment suppliers in the UK and is recognised as a leading brand by professionals and enthusiasts alike.

Established in the 1970s, the Sealey range features over 12,500 product lines, including Garage & Workshop, Bodyshop, Agricultural, Engineering and Vehicle Service Tools.

Check the Sealey website: www.sealey.co.uk

COMMITMENT TO QUALITY

Sealey continually strives to provide high-quality, innovative tools and equipment for the professional, which comply with or exceed international standards whilst never compromising on quality to achieve value for money. All Sealey products are covered by a minimum 1 year parts and labour guarantee.

Hand tools are covered by a no-quibble lifetime guarantee* against manufacturing defects. *Lifetime replacement guarantee on all Premier, Sealey and Siegen Hand Tools.

The no-quibble guarantee covers individual items within sets. Excludes TRX-Star* T40 bits, breaker bar knuckles, drill bits, cutting blades and taps and dies. Repair kits will be sent out for most ratchet wrenches.

SERVICE & AFTERSALES SUPPORT

Buy with confidence - all Sealey products are backed-up by the Sealey Service Centre which holds over 150,000 different spare parts for key products.

Specifications and descriptions on this promotion are given in good faith but may change without notice and do not form any part of sale contract, E & OE. *Please refer to www.sealey.co.uk/guarantee for more information on guarantees. TRX-STAR, TRX-TS and TRX-P tools are suitable for driving TORX® and TORX PLUS® fasteners respectively. TORX® and TORX PLUS® are registered trademarks of Acument Intellectual Properties, LLC.



YOUR LOCAL TOOL VAN CONTACTS:

- Sydney and Regional NSW
Peter - 0413 834 434
- Melbourne, South East, Mornington Peninsula & Gippsland
Jens - 0439 566 773
- NSW Central Coast*
Dominic - 0401 817 952
- Melbourne, Outer East*
Jeffrey - 0493 092 222

* Licensed Area Distributors



Terms & Conditions:

All prices are inclusive of GST, and are valid until 30th September 2021. Excludes any other offers. Express Tools Direct reserve the right to change prices without prior notice. Subject to stock availability. Images are a guide only. Ref.: ETD_Sealey_JULY_SEP_2021

Express Tools Direct – ABN 79 050 722 293 Brookvale, NSW 2100 – 02 9939 0566 - sales@expresstoolsdirect.com.au